

Montana Nonprofit Association

2020 ANNUAL REPORT

“

**We met the most urgent of needs, provided reassurance and resources,
and offered leadership fueled by compassion and an abiding commitment
to service – all while learning to operate in a
completely altered virtual terrain.**

”

Dear Friends,

Like you, none of us at Montana Nonprofit Association (MNA) could have predicted what 2020 had in store. The pandemic's impact was inescapable: economic conditions, health and safety needs, uncertainty, isolation, and an undercurrent of fear and anxiety. Everything we knew was turned on its head. During this same timeframe we saw the murder of George Floyd and watched as Montana's tribal elders were disproportionately lost to the pandemic. We conducted a decennial census under almost impossible conditions and capped the year off with a highly divisive and contentious presidential election.

In this context, Montana's nonprofits rose to the occasion. We met the most urgent of needs, provided reassurance and resources, and offered leadership fueled by compassion and an abiding commitment to service - all while learning to operate in a completely altered virtual terrain.

Looking back, we see the extraordinary stress and trauma. And we also see generosity, adaptability, human care and understanding, heightened focus on equity, increased attention to what matters most, and collective resilience. In other words, while 2020 was a year defined by the pandemic, there was also more.

MNA was privileged to play a significant support and leadership role within our 600 plus nonprofit membership and the larger community. By every measure we ended 2020 as strong as we've ever been financially, in membership, policy influence, and resources provided. We say that with humility and gratitude, recognizing that every step of the

way you were at our side as members and partners. At times we saw you almost daily in Town Hall meetings; you sent us information that became part of our news digest; and you worked with us to gather information which allowed us to be effective advocates. We partnered under surreal circumstances to obtain a Census count that netted Montana another Congressional seat. Thank you. Thank you for your partnership, your membership, and your work.

As we close the door on 2020, we acknowledge the toll the year took. And we also acknowledge that - in navigating this time together - Montana's nonprofit community was forged into something stronger - something with the resolve to meet the challenges ahead.

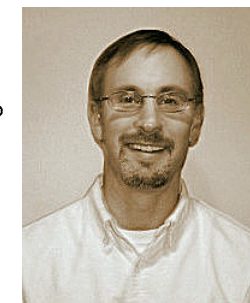
From all of us on the staff team and the MNA Board of Directors, thank you for the great opportunity to be your association. Together we are many missions, one voice.

Sincerely,



Liz Moore
Executive Director

Jason Rittal
Board Chair



TEAM MNA

- Dina Fike** – Digital Communications Associate
- Michael Hale** – Operations Manager
- Adam Jespersen** – Director of Nonprofit Innovation
- Barbara Knutson** – Office Manager
- Leandra Lipson** – Communications & Resource Development Director
- Liz Moore** – Executive Director
- Tylyn Newcomb** – Membership Manager
- Shelby Rogala** – Professional and Organizational Development Director



BOARD OF DIRECTORS

Jason Rittal, Chair

Deputy Director, MACO

HELENA

Larry Johson, Vice Chair

Attorney at Law

HAMILTON

Andrea Vernon, Secretary

Executive Director of Montana, Campus Compact and
Director of Civic Engagement

MISSOULA

Alison Paul, Treasurer

Executive Director, Montana Legal Services

HELENA

Susan Denson Guy, Member-at-Large

Executive Director, Emerson Center for the Arts and Culture

BOZEMAN

Jim Bennett

Relationship Manager, Northwest Farm Credit Services

HAVRE

Kelly Heaton

Executive Director, Domestic and Sexual Violence Services

RED LODGE

Marci McLean-Pollock

Executive Director, Western Native Voice

BILLINGS

Leslie Modrow

Development Director, Billings Public Library Foundation

BILLINGS

Jackie Muri

Senior Director of Strategy & Business Development,
SCL Health

MILES CITY

Alan Satterlee

Executive Director, North Valley Hospital Foundation

WHITEFISH

Suzanne Severin, CPA

Vice President, Anderson ZurMuehlen

HELENA

Bob Wilmouth

President, Rocky Mountain College

BILLINGS

Todd Wilson

Executive Director, Helena Indian Alliance

HELENA

Facing a global pandemic created immense barriers and challenges for Montana's nonprofits in 2020. In response, MNA resolved to provide as many relevant resources and pertinent up-to-date information to Montana's nonprofit community as possible, so that nonprofits had access to the knowledge and tools to make the best possible decisions.

Through Town Hall information sessions, curated website content, reliable and just-in-time communications,

participation on the Governor's Coronavirus Relief Fund Taskforce, and ongoing state and national advocacy work, MNA aided hundreds of nonprofit organizations in gaining invaluable resources and funding.

All MNA programming shifted to virtual or pre-recorded content in 2020 and almost all was offered at no cost.

SNAPSHOT OF ACTIVITIES



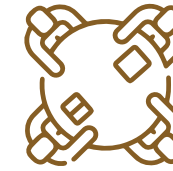
Hosted 43 Town Halls
attended by 4,241
Participants



Offered 5 Workshops
Focused on Navigating
the Difficult Times for 446
Participants



Presented MNA's First-Ever
Virtual Conference
Attended by 1,870 Nonprofit
Professionals Representing
452 Organizations



Facilitated 3 Monthly
Affinity Groups
for Executive Directors and
Local Network Leaders



Published 7 Unique
Covid-19 Responses Toolkits



**Sent 59 Covid-19
Resource Emails**
to an Audience of over
4,300 Individuals



Launched Catalyst,
MNA's Leadership
Development Cohort



Expanded **On-Demand** and
One-On-One Consulting



Nearly **100%** of the respondents to MNA's COVID-19 impact survey indicated they had applied for and received **Paycheck Protection Program (PPP) funding**.

1,044 Montana profits received PPP loans totaling **\$198,042,011** to sustain their operations.

1,513 nonprofits received social services grants from the State of Montana amounting to **\$55M** additional funds directed to mission related activity that supported communities in the most chaotic and unpredictable of circumstances related to COVID-19.

MNA partnered with the State of Montana in helping craft the grant process and concept, including grant reporting.

FROM THE MEMBERS

"I wanted to take this opportunity to thank you for providing such timely and relevant resources and tools during this time of crisis and uncertainty. These have been invaluable to me and I'm sure many others as we try to navigate the seemingly endless stream and overload of information out there. Thank you. Thank you. Thank you. MNA has proven to be such a valuable asset to the nonprofits in our state."

"I am so impressed with the support and information that MNA has been pumping out these last few weeks."

"Thank you for your hard work. I have been participating in many of your town halls and find your resources and constant updates incredibly helpful, informative, and reassuring. Take care of yourself and be well!"

"Thank you for all the amazing work you have been doing for the nonprofit community, you and the rest of the MNA team are absolute champions!"

"This webinar was undoubtedly one of the most useful trainings I have ever attended."

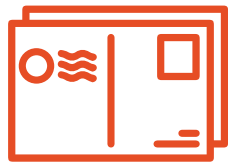
"I know you are all busy – but I want to thank you for the awesome information and work you are doing to help support our nonprofit organizations at this time."



COVID-19 had a devastating impact on Montana's ability to ensure a complete and accurate census count. In response, MNA teamed-up with the Montana Department of Commerce and other partners to rapidly deploy a targeted plan to bolster the Census 2020 get-out-the-count activities to increase self-response in rural Montana. MNA also served as a statewide coordinator with other Census 2020 Cares Act project partners.

Due to these efforts, Montana went from a 50% self-response rate a 60.4% response rate equating to an additional **22,000 households** representing more than **50,000 residents** and **\$1B** in funding over the next decade.

CENSUS 2020 ACTIVITIES



Mailed 214,786 Postcards
to Households in
Rural Areas



**Made 45,948
Reminder Calls**



**Reached 25,754
Households through
Giveaways**



**Partnered with 113
Grassroots
Contacts and 63 Businesses
to Get-Out-the-Count**



**Granted 23 Nonprofits \$37,150
to Fund Get-Out-the-Count
Activities**



In 2020, MNA's 601 nonprofit members were the core of the Association. In addition, MNA benefited from the partnership of 78 affiliate members and 8 sustaining members, many of them whom provide support services to the nonprofit community.

NONPROFIT MEMBERSHIP STATS

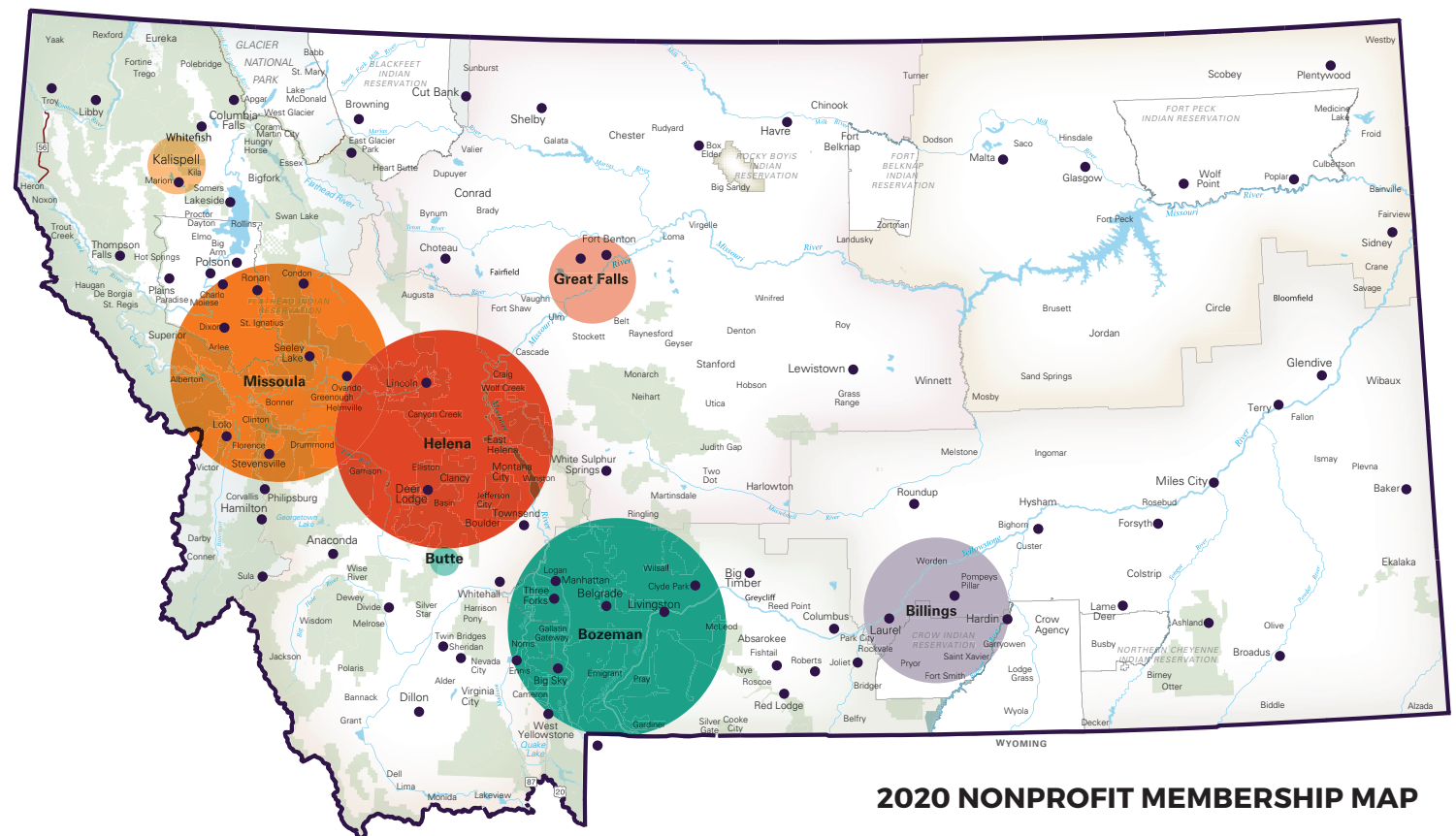
86.7%
Retention Rate

601
Nonprofit Members

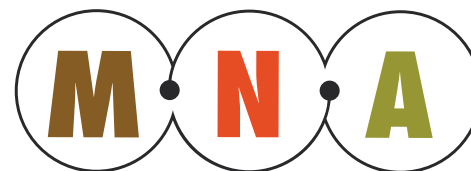
38%
Rural Members

NONPROFIT MEMBERS BY REGION

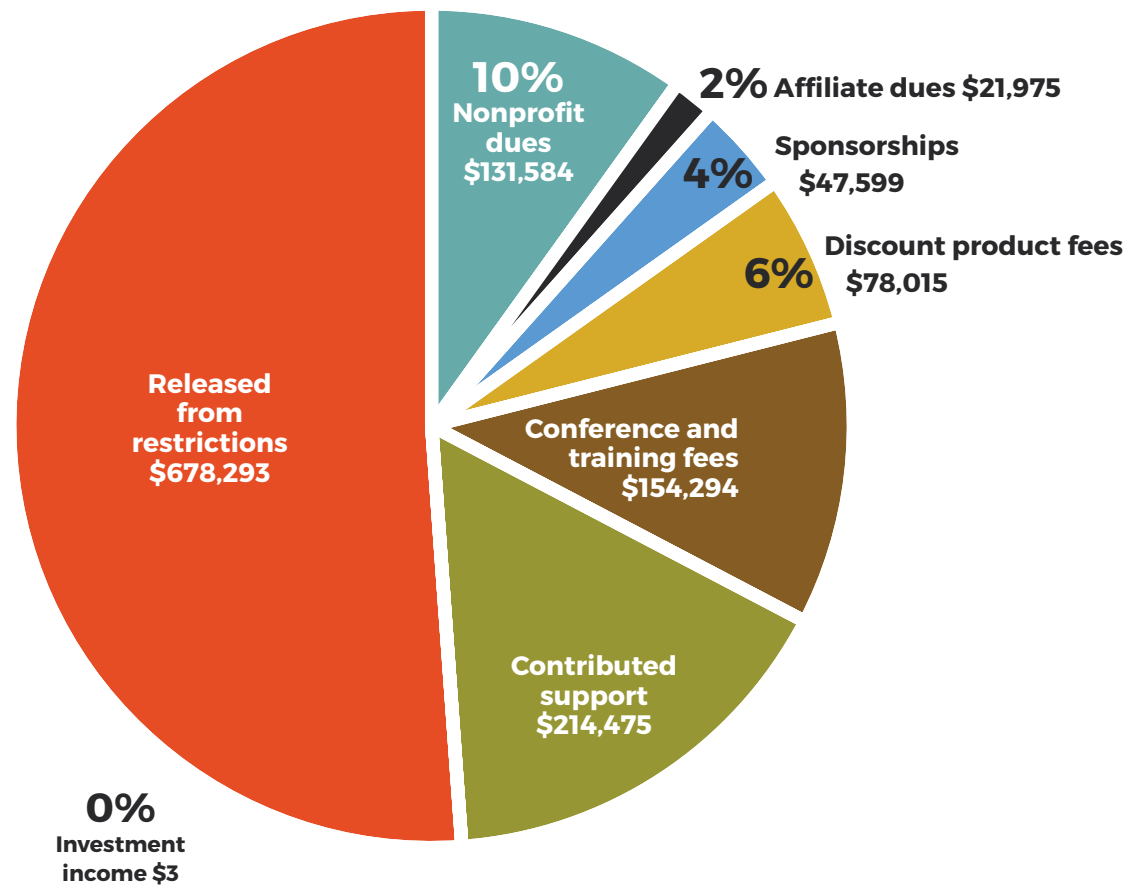
Location	#	%
Rural	228	38%
Helena	89	15%
Missoula	86	14%
Bozeman	62	10%
Billings	61	10%
Great Falls	36	6%
Kalispell	24	4%
Butte	15	2%
Grand Total	601	100%



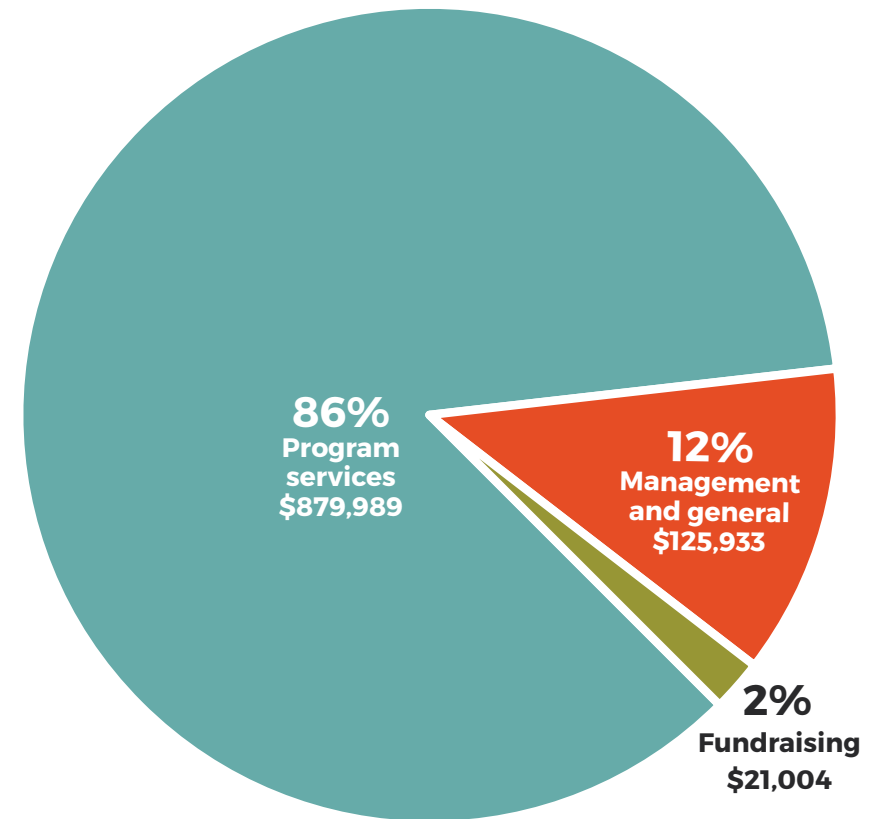
2020 NONPROFIT MEMBERSHIP MAP



MNA's operational revenue in 2020 equaled \$1,326,868.
Expenses equaled \$1,026,926. Year-end net assets totaled \$376,535.



Total revenue and support
\$1,326,868



Total expenses
\$1,026,926

86% of MNA's expenditures were for program services including nonprofit advocacy, building nonprofit leadership and management capacity, producing research and information about the sector, and providing nonprofits across the state with resources and cost-saving products and services. 12% of expenditures were for administration and 2% for fundraising.

MONTANA NONPROFIT DECEMBER 31, 2019 AND 2020

	December 31 2020	2019
ASSETS		
CURRENT ASSETS		
Cash and cash equivalents	\$ 529,528	\$ 264,500
Accounts receivable	27,275	26,429
Grants receivable, current	135,000	164,910
Prepaid expenses	-	5,700
Total current assets	691,803	461,539
FIXED ASSETS		
Property and equipment	122,646	104,828
Less accumulated depreciation and amortization	(89,076)	(78,538)
Total fixed assets	33,570	26,290
OTHER ASSETS		
Refundable unemployment reserve	6,630	6,430
Grants receivable, long term, net of discount	34,300	99,000
Total other assets	40,930	105,430
Total assets	\$ 766,303	\$ 593,259
LIABILITIES AND NET ASSETS		
CURRENT LIABILITIES		
Accounts payable	\$ 6,567	\$ 20,749
Accrued payroll liabilities	54,453	40,690
Deferred revenue	53,862	72,418
Total current liabilities	114,882	133,857
NET ASSETS		
Without donor restrictions	376,535	76,593
With donor restrictions	274,886	382,809
Total net assets	651,421	459,402
Total liabilities and net assets	\$ 766,303	\$ 593,259

MONTANA NONPROFIT DECEMBER 31, 2019 AND 2020

	2020 Total	2019 Total
REVENUE AND SUPPORT		
Nonprofit member dues	\$ 131,584	\$ 112,575
Affiliate member dues	21,975	23,080
Sponsorships	47,599	86,924
Discount product fees	78,015	106,006
Conference and training fee	154,294	127,868
Contributed support	785,475	680,873
Investment income, net	3	26
Released from restrictions	-	-
Total revenue and support	1,218,945	1,137,352
EXPENSES		
Program services	879,989	568,501
Management and general	125,933	152,868
Fundraising	21,004	36,165
Total expenses	1,026,926	757,534
CHANGE IN NET ASSETS	192,019	379,818
Net assets at beginning of year	459,402	79,584
NET ASSETS AT END OF YEAR	\$ 651,421	\$ 459,402

NONPROFIT MEMBERS

A Carousel for Missoula Foundation Inc.
 Abbie Delaney Jones Foundation
 Abbie Shelter
 Absaroka Beartooth Wilderness Foundation
 Absarokee Lending Library
 AccessPromise
 Action Inc.
 Adult Resource Alliance of Yellowstone County
 Adventure Cycling Association
 Adventure Scientists
 AERO
 Alberta Bair Theater
 Alliance for Youth, Inc.
 Alpine Artisans, Inc.
 Alternatives, Inc.
 Amani for Africa USA Foundation
 American Jobs for America's Youth, Montana Chapter
 American Prairie Reserve
 American Red Cross of Montana
 Anaconda Community Foundation
 Angel's Wing of Montana
 Animal Wonders, Inc
 Animals 4 Therapy
 Archie Bray Foundation
 Area II Agency on Aging
 Artists and Craftsman of the Flathead
 Arts Council of Big Sky
 Arts Missoula
 ASPEN- Abuse Support & Prevention Education Network
 Back Country Horsemen of the Flathead
 Backcountry Squatters Nonprofit
 Bannack Association
 Barrett Hospital Foundation
 Bear Paw Development Corporation
 Beartooth Billings Clinic Foundation
 Beartooth Front Community Forum
 Beartooth Humane Alliance
 Beartooth Mountain Christian Ministries
 Beartooth Recreational Trails Association, Inc.
 Beaverhead Trails Coalition
 Befrienders, Inc.



Behavioral Health Alliance of MT
 Belgrade Community Coalition
 Benefis Health System Foundation
 Big Brothers Big Sisters NW Montana
 Big Brothers Big Sisters of Helena and Great Falls
 Big Brothers Big Sisters of Yellowstone County
 Big Hole River Foundation, Inc.
 Big Hole Watershed Committee
 Big Horn Hospital Association
 Big Sandy Cultural Fund
 Big Sandy Medical Center
 Big Sky Autism Project
 Big Sky Bravery
 Big Sky Community Housing Trust
 Big Sky Community Organization
 Big Sky Economic Development Corporation
 Big Sky Film Institute
 Big Sky Institute for the Advancement of Nonprofits
 Big Sky Science Education Enhancement
 Big Sky Senior Services, Inc.
 Big Sky Youth Empowerment Project
 Bigfork ACES Inc.
 Bigfork Art and Cultural
 BigFork Ladies Service Club
 Bigger Sky Kids
 Bighorn Valley Health Center
 Bike Walk Montana
 Billings Child Care Association
 Billings Clinic
 Billings Community Foundation

Billings Leadership Foundation
 Billings Mediation Center
 Billings Public Library Foundation
 Billings Symphony Society
 Billings TrailNet
 Bitter Root Water Forum
 Bitter Root Resource Conservation & Development Area
 Bitterroot Ecological Awareness Resources
 Bitterroot Performing Arts Council
 Bitterroot Trail Preservation Alliance
 Blackfoot Challenge
 Blue Mountain Clinic, Inc.
 Bob Marshall Wilderness Foundation Inc.
 Boyd Andrew Community Services
 Boys and Girls Club of Carbon County
 Boys and Girls Club of Cascade County
 Boys and Girls Club of Lewistown
 Boys and Girls Club of Richland County
 Boys and Girls Club of the Flathead Reservation & Lake County
 Boys and Girls Club of the Northern Cheyenne Nation
 Boys and Girls Clubs of Yellowstone County
 Bozeman Art Museum
 Bozeman Health Foundation
 Bozeman Public Library Foundation Inc
 Bozeman Symphony Society
 Bridgercare
 Brightways Learning
 Buckets of Love, Inc
 Burton K. Wheeler Center
 Buses of Yellowstone Preservation Trust, Inc



Butte 4-C's
 Butte Cares, Inc
 Butte Emergency Food Bank
 Butte Rescue Mission
 C.M. Russell Museum
 Camp Mak-A-Dream
 Cancer Support Community Montana
 Carbon County Arts Guild & Depot Gallery
 Carbon/Stillwater Community & Senior Programs
 Career Futures, Inc.
 Career Training Institute
 Career Transitions
 Carter County Museum
 CASA for Kids, Inc. Flathead County
 CASA of Hill County
 CASA of Lake & Sanders Counties
 CASA of Lewis & Clark and Broadwater Counties
 CASA of Missoula
 CASA-CAN Children's Advocate Network
 Cascade County Law Clinic
 Catholic Foundation of Eastern Montana
 Catholic Social Services of Montana
 Center for Asbestos Related Disease
 Center for Large Landscape Conservation
 Center for Restorative Youth Justice
 Central Asia Institute
 Child Bridge, Inc.
 Child Care Connections
 Child Care Resources
 Child Development Center
 Children's Alliance of Montana
 Children's Museum of Montana
 Chinook Horses
 Cinnabar Foundation
 Citizens For A Better Flathead
 Clark Fork School, Inc.
 Clark Fork Valley Hospital Foundation
 Code Girls United
 Cohesion Dance Project, Inc
 Community 7 Television
 Community Counseling and Correctional Services, Inc.
 Community Dispute Resolution Center of Missoula County
 Community Food & Agriculture Coalition
 Community Foundation for a Better Bigfork

Community Leadership & Development Inc
 Community Option Resources Enterprises, Inc.
 Conrad Mansion Museum
 Conservatory ASL Northwest
 Corvallis School Foundation
 Cottonwood ALC, Inc
 Council for the Arts
 Creative Arts Council
 Crosscut Mountain Sports Center
 Custer Network Against Domestic Abuse Inc.
 Daly Hospital Foundation
 Daly Mansion Preservation Trust
 Darby Schools Excellence Fund
 Dawson College Foundation
 Dawson County Domestic Violence Program
 Dawson County Healthy Communities Coalition
 Deep Bay Center
 Developmental Educational Assistance Program
 Disability Rights Montana
 Discovery Developmental Center
 Dog Tag Buddies
 Dolce Canto, Inc.
 Domestic and Sexual Violence Services of Carbon County
 Donald and Carol Roberts Foundation
 Dream Adaptive Recreation, Inc.
 Dress for Success Billings
 Eagle Mount Bozeman
 Eagle Mount Great Falls
 Earthtone Outside MT
 Eastern Montana CASA-GAL Inc.
 Eastern Montana Industries
 Easterseals-Goodwill Northern Rocky Mountain, Inc.
 Ecology Project International
 Education Foundation for Billings Public Schools
 Emerson Center for the Arts and Culture
 Emma's House
 Empower MT
 Energy Share of Montana
 Evergreen Kids Corner
 ExplorationWorks!
 Families First Learning Lab
 Family Connections
 Family Promise of Gallatin Valley, Inc.
 Family Promise of Greater Helena



Family Promise of Yellowstone Valley
 Family Service, Inc.
 Family Support Network
 Family Tree Center
 Farm Hands-Nourish The Flathead
 Farm to School of Park County
 Flathead Community Foundation
 Flathead Food Bank, Inc.
 Flathead Lakers
 Flathead Lutheran Bible Camp
 Flathead Rivers Alliance
 Flathead STEAM Alliance
 Florence Crittenton Home & Services
 Fort Owen Ranch Foundation
 Forward MT Foundation
 Foundation for Animals
 Foundation for Community Care
 Foundation for Community Health
 Foundation for the Diocese of Helena
 Foy's to Blacktail Trails
 Freedom in Christ Prison Ministry
 Friends of Dornix Park
 Friends of FMC Foundation
 Friends of the Flathead Avalanche Center
 Friends of the Historical Museum at Fort Missoula
 Friends of the Library (Livingston)
 Friends of the Missouri Breaks Monument
 Friends of The Teton
 Friends of the Yellowstone Gateway Museum
 Front Range CASA/GAL

Future West, Inc.
 Gallatin County Love in the Name of Christ
 Gallatin Historical Society
 Gallatin River Task Force
 Gallatin Valley Farm to School
 Gallatin Valley Land Trust
 Gallatin Valley YMCA
 Gals Going Global
 Game Face Sports
 Garden City Ballet
 Garden City Harvest
 Girl Scouts of Montana and Wyoming
 Girls on the Run Flathead Valley
 Glacier County Historical Museum
 Glacier National Park Conservancy
 Glacier Queer Alliance
 Glacier-Two Medicine Alliance
 Global Village, Inc.
 Good Samaritan Ministries Thrift Store
 Grandstreet Theatre
 Great Burn Conservation Alliance
 Great Fall's Children's Receiving Home
 Great Falls Clinic Legacy Foundation
 Great Falls Development Authority, Inc.
 Great Falls LGBTQ+ Center
 Great Falls Public Schools Foundation
 Great Falls Senior Citizen's Center
 Great Falls Symphony Association
 Great Pyrenees Rescue Montana
 Greater Gallatin United Way



Greater Montana Foundation
 Greater Polson Community Foundation
 Greater Yellowstone Coalition
 Grizzly & Wolf Discovery Center
 H.E.A.R.T. Ministries
 Habitat for Humanity Great Falls Area
 Habitat for Humanity of Gallatin Valley
 Habitat for Humanity of Missoula
 Habitat for Humanity of Ravalli County
 Hamilton Players, Inc.
 Haven
 Headwaters Foundation
 Healthy Granite County Network
 Healthy Mothers Healthy Babies, The Montana Coalition, Inc.
 Heart of the Rockies Initiative
 Heart of the Valley Animal Shelter
 Hearts and Hands Hospice
 Helena Area Community Foundation
 Helena Area Habitat for Humanity
 Helena Civic TV
 Helena Community Connections Inc
 Helena Education Foundation
 Helena Family YMCA
 Helena Food Share
 Helena Guardians
 Helena Indian Alliance
 Helena Symphony Society
 Helena Tourism Business Improvement District
 Help Center, Inc.
 HELP Committee and Boys & Girls Club of the Hi-line
 Helping Hooves
 Heroes and Horses
 Hi-Line Home Programs, Inc.
 Holter Museum of Art
 Home ReSource
 Homes for Our Heroes
 Homeward, Inc.
 Hope Africa Collective
 Human Resource Development Council, District 4
 Human Resource Development Council, District 7
 Human Resource Development Council, District 9
 Human Science Institute, Inc.
 Humane Society of NW Montana
 Humane Society of Western Montana

Humanities Montana
 Identity Incorporated
 Imagine IF Library Foundation
 Indian Law Resource Center
 Intermountain Children's Home
 Intermountain Opera Association of Bozeman
 International Organic Inspectors Association
 International Traditional Games Society Inc
 Invasive Species Action Network
 Jeannette Rankin Peace Center
 Jefferson Valley Community Foundation
 Job Connection, Inc.
 Kiel's Konnection
 Kiwanis Foundation of Montana
 Kootenai Heritage Council, Inc.
 Kootenai River Development Council
 L.P. & Teresa Anderson Foundation
 Lake County Council on Aging
 Laurel Montana Community Foundation Inc
 LaVie: An Early Pregnancy Clinic
 Leadership Montana
 Lewis & Clark Humane Society
 Lewis and Clark Library Foundation
 Lewis and Clark Literacy Council
 Lewis and Clark Trail Heritage Foundation
 Libby Community Garden
 Liberty Place, Inc.
 Life Houses, Inc.
 Lighthouse Christian Home & Services, Inc
 Lincoln County Transportation Service, Inc.
 Literacy Bitterroot
 Livingston Food Resource Center
 Livingston Healthcare Foundation
 Luccock Park Methodist Camp Association
 Maclean Animal Adoption Center
 Madison County Nursing Homes Foundation
 Madison River Foundation, Inc.
 Madison Valley Medical Center Foundation
 MAPS Media Institute
 Marion Fire Auxiliary Inc
 Mason Moore Foundation
 MASS Design Group
 MCA Education Foundation
 Meagher County Stewardship Council



Merlin Collaborate, Consult & Community
 Messengers for Health
 Miles City Academy
 Miles City Area Community Fund
 Milk River Inc.
 Mineral County Economic Development
 Mission Mountain Enterprises, Inc.
 Mission Valley Aquatics & Fitness
 Mission Valley Ice Arena Association
 Mission West Community Development Partners
 Missoula Aging Services
 Missoula Area Youth Hockey Association
 Missoula Art Museum
 Missoula Butterfly House and Insectarium
 Missoula Children's Theatre
 Missoula Community Access Television Inc.
 Missoula Community Foundation
 Missoula Downtown Foundation
 Missoula Education Foundation
 Missoula Food Bank & Community Center
 Missoula Housing Authority
 Missoula Interfaith Collaborative
 Missoula Manor Homes
 Missoula Ravalli Transportation Management Association, Inc
 Missoula Transportation and Restoration Museum
 Missoula Urban Demonstration Project
 Missoula Writing Collaborative
 MoFi (Montana Community Development Corporation)
 MonDak Heritage Center
 Montana 4-H Foundation

Montana A Cappella Society
 Montana Amateur Sports, Inc. dba Big Sky State Games
 Montana Aquatic Resources Services, Inc.
 Montana Association for the Blind
 Montana Association of Symphony Orchestras
 Montana Audubon
 Montana Budget and Policy Center
 Montana CASA GAL
 Montana Center for Compassion Education
 Montana Chamber Foundation, Inc.
 Montana Coalition Against Domestic & Sexual Violence
 Montana College Attainment Network
 Montana Community Foundation, Inc.
 Montana Conservation Corps
 Montana Conservation Voters Education Fund
 Montana Cooperative Development Center
 Montana Council for Exceptional Children
 Montana Council of Teachers of Mathematics
 Montana Council on Developmental Disabilities
 Montana Cowboy Hall of Fame & Western Heritage Center, Inc
 Montana Creativity Quest - Montana Destination Imagination
 Montana Dental Association
 Montana Discovery Foundation
 Montana Economic Developers Association
 Montana Empowerment Center, Inc
 Montana Environmental Information Center
 Montana Farm Bureau Foundation
 Montana FFA Foundation Incorporated
 Montana Food Bank Network
 Montana Free Press



Montana Hands & Voices
 Montana Health Professionals for a Healthy Climate
 Montana Healthcare Foundation
 Montana History Foundation
 Montana Home and Private Schools
 Montana Independent Living Project
 Montana Innocence Project
 Montana Justice Foundation
 Montana Land Reliance
 Montana Law Enforcement Museum
 Montana Learning Center of Canyon Ferry Lake
 Montana Legal Services Association
 Montana Library Association, Inc.
 Montana Masonic Foundation
 Montana Medical Association Foundation
 Montana Meth Project
 Montana Mouthful LTD
 Montana Native Plant Society
 Montana Newspaper Foundation
 Montana Operation Lifesaver, Inc.
 Montana Outdoor Science School
 Montana Police Protective Association Foundation
 Montana Pork Producers Council
 Montana Post Secondary Educational Opportunities Council
 Montana PTA
 Montana Public Health Association
 Montana Public Health Institute
 Montana Registry of Interpreters for the Deaf
 Montana Renewable Energy Association
 Montana School for the Deaf and the Blind
 Montana Science Center
 Montana Section of the American Water Works Association
 Montana Shares
 Montana State University - Billings Foundation
 Montana Supporting Military
 Montana Tech Foundation
 Montana Trails Recreation Parks Association
 Montana United Indian Association
 Montana Veterans Foundation
 Montana Warriors on the Water
 Montana Watershed Coordination Council
 Montana Weed Control Association
 Montana Wildlife Federation
 Montana Woman Foundation

Montana's Credit Unions for Community Development
 Montana's Peer Network
 Montanical Garden
 MontPIRG Leadership Fund
 Moonlight Community Foundation
 Morning Star Expeditions, Inc.
 Mountain Belles (Bozeman)
 Mountain Home Montana, Inc.
 Mountain Journal, Inc
 Mountain Pursuit
 MSU-Northern Foundation
 Museums Association of Montana
 Musselshell Valley Community Foundation
 NACDC Financial Services
 NAMI Bozeman
 Nate Chute Foundation
 National Alliance on Mental Illness of Montana
 National Association of Social Workers - Montana Chapter
 National Center for Appropriate Technology
 National Indigenous Women's Resource Center, Inc.
 National Museum of Forest Service History, Inc.
 Native American Development Corporation
 Nature-Link Institute
 Neighbor To Neighbor
 Neighborworks Great Falls
 NeighborWorks Montana
 Ninepipes Museum of Early Montana
 North American Indian Alliance
 North Central Area Agency on Aging
 North Central Independent Living Services
 North Lake County Library Foundation
 North Valley Community Park Development
 North Valley Food Bank
 North Valley Hospital Foundation
 North Valley Music School
 Northeast Montana Health Services Charitable Foundation
 Northern Plains Resource Council
 Northwest Montana Head Start
 Northwest Montana United Way, Inc.
 NOVA Center for the Performing Arts
 Old Montana Prison and Auto Museums
 Old Trail Museum
 One Valley Community Foundation
 Oneness Project



Open Aid Alliance
 Opportunities, Inc.
 Opportunity Link, Inc.
 Opportunity Resources, Inc.
 Organic Advisory and Education Council
 Orphan Girl Children's Theatre
 Outdoor Writers Association of America, Inc
 Power for Abundant Recovery Ministries
 Parents Let's Unite for Kids
 Paris Gibson Square
 Park County Community Foundation
 Park County Environmental Council
 Park County Friends of the Arts
 Park County Senior Citizens Center
 Partners Hope Foundation
 Peers Unlimited
 People and Carnivores, Inc
 Petroleum County Community Center
 Planned Parenthood of Montana
 Plant a Seed READ
 Plentywood Educational Alumni Foundation
 Pompeys Pillar Historical Association
 Pondera Arts Council
 Poverello Center, Inc.
 Powder River Basin Resource Council
 Powell County Literacy Program
 Prairie Community Hospital Foundation
 Presbyterian Church USA dba Peace Place
 Preserve Montana
 Prickly Pear Land Trust

Project Ascent
 Project Hope
 Providence Montana Health Foundation
 Pull Together Now
 Raise Montana
 Ranchers Stewardship Alliance
 Ravalli County Council on Aging
 Ravalli County Museum and Historical Society
 Reach Higher Montana
 Reach Out & Care Wheels, Inc.
 Reach, Inc.
 Realize Hope
 Recycle Montana, Inc
 Red Ants Pants Foundation
 Red Feather Development Group
 Red Lodge Area Community Foundation
 Red Lodge Fire Rescue Foundation
 Red Willow Learning Center
 Region IV Family Outreach, Inc.
 Resource, Support and Development, Inc.
 Richland Opportunities, Inc.
 Rimrock
 River's Edge Trail Foundation
 RiverStone Health Foundation
 Riverstone School
 Roberts Community Foundation
 Roberts Cultural Council, Inc.
 Rocky Mountain Ballet Theatre
 Rocky Mountain College
 Rocky Mountain Development Council, Inc.



Rocky Mountain Front Weed Roundtable
 Roots Family Collaborative
 Ruby Habitat Foundation
 Ruby Valley Healthcare Foundation
 Run Wild Missoula
 Rural Dynamics, Inc.
 Rural Employment Opportunities, Inc.
 SAFE Harbor, Inc.
 Sagebrush Food Pantry
 Salish Kootenai College Foundation
 Samaritan House, Inc.
 Sanders County Coalition For Families
 Sanders County Community Housing Organization, Inc
 School Services of Montana
 Seeley Lake Community Foundation
 Selway-Bitterroot Frank Church Foundation
 Shane Lalani Center for the Arts
 Shepherds Hand
 Simulation in Motion Montana
 Sixth Judicial District CASA GAL
 Smelter City Family Development
 Snowy Mountain Development Corporation
 Soft Landing Missoula
 Soil and Water Conservation Districts of MT
 Soil Cycle
 South Central Montana Regional Mental Health Center
 Southeast Montana Area Revitalization Team
 Southwest Montana Veterans Home Foundation Inc
 Southwest MT Community Health Center
 Southwestern Montana Family YMCA
 Sparrows Nest of NW MT
 Special K Ranch, Inc.
 Special Olympics Montana
 Spirit of Life Community Bike Shop
 St Catherine Family Health Care Clinic & PRC
 St. John's Lutheran Ministries
 St. John's United
 St. Labre Indian School Educational Association
 St. Peter's Health Foundation
 STEP, Inc
 Sula Country Life Club-Community Clubhouse
 Summit Independent Living Center
 Sun River Watershed
 Sunburst Unlimited, Inc.

Sunnyside Farms, Inc
 Sunrise Women's Clinic
 Supporters of Abuse Free Environments, Inc.
 Sustainable Montana
 Swan Valley Connections
 Sweet Grass Community Foundation
 Sweet Grass Technical Institute
 Sweet Pea a Festival of the Arts
 Sweetgrass Development, EDD
 Tamarack Grief Resource Center
 The Art Center
 The Caring Foundation of Montana
 The Center for Community Ownership
 The Children's Shakespeare Society
 The Clay Studio of Missoula
 The Cody Dieruf Foundation
 The COMMIT Foundation
 The Confluence Center
 The Friendship Center of Helena, Inc
 The Montana Racial Equity Project
 The Myrna Loy
 The National Center for Unwanted Firearms
 The Nature Conservancy
 The Nurturing Center
 The O'Hara Commons & Sustainability Center
 The Parenting Place
 The Rosebud Foundation
 The Solidarity Project
 The Station Foundation
 The Traveling School
 Thermus Aquaticus Learning & Swim Center
 Thompson Falls Film & Theater Foundation aka Rex Theater
 Project
 Thrive
 Tikkun Olam Ministries
 Trap Free Montana
 Travelers' Rest Preservation & Heritage Association
 Treacy Foundation
 Tri-County Firesafe Working Group
 Trust Montana, Inc.
 Turning the Wheel Missoula
 United in Light, Inc
 United Way of Beaverhead
 United Way of Butte and Anaconda

United Way of Cascade County
 United Way of Hill County
 United Way of Missoula County
 United Way of the Lewis & Clark Area
 United Way of Yellowstone County
 Upper Missouri Waterkeeper
 Upper Swan Valley Historical Society, Inc.
 Valley County Community Foundation
 Valley Oak Education Resource Center
 Veterinary Initiative for Endangered Wildlife
 Victim-Witness Assistance Services Inc.
 Vital Ground Foundation
 Volunteers of America Northern Rockies
 Warriors & Quiet Waters
 Watershed Education Network
 WaterWorks Art Museum
 Watson Children's Shelter, Inc.
 West Mont
 West Yellowstone Foundation
 Western Montana Area VI Agency on Aging
 Western Montana Chapter for the Prevention of Elder Abuse
 Western Montana Creative Initiatives
 Western Montana Equine Rescue & Rehabilitation, Inc.
 Western Native Voice
 Western Sustainability Exchange
 Whitefish Community Foundation
 Whitefish Legacy Partners
 Whitetail Ranch Center
 Wild Montana
 Wild Rockies Field Institute
 Wild Rose Center
 Wilderness Watch, Inc.
 Windhorse Equine Learning
 Winnett ACES
 Women's Opportunity Resource
 Women's Resource Community Support Center
 Women's Voices For The Earth
 Working Dogs for Conservation Foundation
 World Language Initiative-MT
 World Montana
 Writing Coaches of Montana
 Yellowstone Art Museum
 Yellowstone Bighorn Research Association
 Yellowstone Boys and Girls Ranch Foundation

Yellowstone CASA
 Yellowstone Club Community Foundation
 Yellowstone Ecological Research Center
 Yellowstone Forever
 Yellowstone Historic Center
 Yellowstone Public Radio
 Yellowstone River Parks Association Inc.
 Yellowstone Valley Animal Shelter
 Yellowstone Wildlife Sanctuary
 Yes Youth Empowerment Services
 Youth Connections
 Youth Homes, Inc.
 Youth, Inc.
 YWCA Billings
 YWCA Helena
 YWCA Missoula
 YWCA of Great Falls / Mercy Home
 Zero to Five Montana
 ZooMontana
 Zootown Arts Community Center

AFFILIATE MEMBERS

Allegra Marketing, Print, Mail
 Angela Webster
 Arthur M. Blank Family Foundation (AMB West)
 Aspen Communications
 Associated Employers
 Avitus Group
 Barbara Knutson
 Berkley Human Services
 Big Leap Creative
 Big Sky Chamber of Commerce
 Blackstone
 Bloomerang
 Blueprint
 Bullhook Community Health Center, Inc.
 Carrie Miller Consulting, LLC
 Cassie Carter
 Central House Strategies, LLC
 Chany Reon Ockert Consulting, LLC
 Crowley Fleck PLLP

Donna Watson Lawson
 Dorcie Dvarishkis
 Downtown Bozeman Partnership
 E. Edwin and Joyce Eck
 Edge Marketing + Design
 Edward Jones
 Eventgroove
 First Call Computer Solutions
 First Interstate Bancsystem Foundation
 Flaherty Consulting
 Flow Virtual Solutions
 Frank Accounting & Consulting
 Gianforte Family Foundation
 Glacier Country Tourism
 Glacier County Regional Port Authority
 Glendive Chamber of Commerce
 Halliday & Associates
 Helena BID
 HJ Hudson Consulting
 Imagine! Libraries
 Incite! Consulting
 Jane Urbaska
 Janna Lundquist Consulting
 Jennifer Tynan
 JCCS
 Jim Bennett
 Kathleen Haughey
 Keela
 Kirk Utzinger
 Kristina Klaas + Company, LLC
 Lawrence D. Johnson; Attorney at Law
 Leo Ouellette
 Local Resources
 Marti Kurth
 Mary L Partridge CPA
 Meetings Northwest, Inc
 Mikayla Pitts
 Missoula County Weed District & Extension
 Montana Arts Council
 Montana Association of Counties
 Montana Bankers Association
 Montana Media Lab
 Montana Nursery & Landscape Association
 Montana Public Radio

Montana Society of CPA's
 Montana State University Extension
 Mountain Health CO-OP
 Mountain-Pacific Quality Health
 MSU Bozeman Office of Student Engagement
 My Way 2 Help
 Ned Cooney, Facilitator & Consultant
 Nonprofit Legal Services, LLC
 Northbound Public Affairs, LLC
 Now IT Matters
 Organic Montana
 Park Side Credit Union
 Public News Service
 Purple Snow Promotional Products, LLC
 Ratzlaff Consulting
 Red Lodge Area Chamber of Commerce
 Respect For Refugees
 Richland County Health Department
 S. G. Long and Company
 Sage Solutions Nonprofit Consulting, LLC
 sciGaia
 Shelby Rogala
 Sidney Chamber of Commerce
 Spark the Fire Grantwriting Classes
 Stana Knez
 Still Waters LLC
 Sue Talbot
 Susan Miller
 Tech Impact
 The Blue Squirrel
 The Connection Project
 The Dotted i
 Third Sector Consulting Group, LLC
 Travis Ballenger, Benefit Auctioneer
 Trister, Ross, Schadler & Gold, PLLC
 UM Experiential-Learning Career Services
 University of Montana Campus Compact
 Upper Canyon Outfitters
 Verve Exchange Consulting
 We Are Montana
 Westby Associates, Inc
 Wilson Consulting
 Wipfli LLP
 Wise Choices MT

Workmosis
 Yellowstone Country Montana, Inc
 Yturri Consulting Company

SUSTAINING MEMBERS

Firespring
 GrantHub by Foundant Technologies
 NorthWestern Energy
 Leavitt Group
 M+R Strategic Services
 O.P. & W.E. Edwards Foundation
 PayneWest Insurance
 SCL Health Montana

CONTRIBUTORS

Alan and Elspeth Satterlee
 Alison Paul
 Arthur M. Blank Family Foundation (AMB West)
 Barbara Knutson
 C.B. Pearson
 Cassie Carter
 Daniel Bierschwale
 Dawn Wrigg
 Dennis and Phyllis Washington Foundation
 First Interstate Bancsystem Foundation
 Gary Owen
 GrantHub by Foundant Technologies
 Headwaters Foundation
 Jackie Muri
 Jason Rittal
 Jim Bennett
 Jono McKinney
 Judy Held
 Julie Stine
 Lawrence D. Johnson; Attorney at Law
 Leandra Lipson

Liz Moore
 M. J. Murdock Charitable Trust
 Margaret Owens
 Mary Peterson
 Michael Hale
 Montana Community Foundation, Inc.
 Northwest Area Foundation
 O.P. & W.E. Edwards Foundation
 Oro Y Plata Foundation
 Paul Tuss
 PayneWest Insurance
 Sandra Anderson Fund
 Sheila Rice
 Sue Talbot
 Susan Denson-Guy
 Suzanne Severin
 Terry Profota
 United Way of Missoula County
 United Way of the Lewis & Clark Area
 Wells Fargo Bank
 Wild Rockies Field Institute

Kristina Klaas & Co, LLC
 L.P. & Teresa Anderson Foundation
 Montana Community Foundation
 Montana Healthcare Foundation
 NeighborWorks Montana
 NorthWestern Energy
 O.P. & W.E. Edwards Foundation
 Oro Y Plata Foundation
 PayneWest Insurance
 Rocky Mountain College
 S. G. Long and Company
 The Dotted i
 University of Montana Department of Public Administration and Policy
 University of Montana Office of the President
 Wells Fargo Bank
 Westby Associates, Inc
 Wipfli LLP

SPONSORS

Allegra
 Anderson ZurMuehlen & Co., P.C.
 Association of Fundraising Professionals, MT Chapter
 Avitus Group
 Bloomerang, LLC
 Blue Cross Blue Shield of Montana
 Census 2020
 Dennis and Phyllis Washington Foundation
 Firespring
 First Call Computer Solutions
 First Interstate Bank/Foundation
 First Nonprofit Companies
 Foundant Technologies
 Halliday & Associates
 Headwaters Health
 Helena Area Community Foundation
 Incite! Consulting
 JCCS



