



2019 ANNUAL REPORT



Montana Nonprofit Association

"We learned that having a

BREAKTHROUGH

is just the beginning."

EXECUTIVE DIRECTOR'S LETTER

Montana Nonprofit Association's 2019 Conference theme, Breakthrough, says it all. 2019 was a year of innovation, learning, growth, and accomplishment for the Association.

Early in the year MNA partnered with Montana Community Foundation and others to successfully lead the renewal of Montana's charitable endowment tax credit during the 2019 Legislative Session. We were successful in defending against four additional bills which would have hurt Montana's nonprofit sector either through taxes or undue regulations. MNA also had the honor of being appointed to the Montana Complete Count Committee through which we could effectively engage our members and the larger nonprofit community in Montana's 2020 Census count. Through the generosity of several Montana philanthropists, MNA moved into 2020 positioned to support a strong Census count through collaboration and leadership.

Throughout 2019, MNA's Professional and Organizational Development (POD) expanded in several significant ways. We increased our focus on developing the next generation of nonprofit leaders, hosting "So You Wanna Be a Board Member" events in partnership with local businesses in nine communities, launching two service learning initiatives, and building out our multigenerational team training program. We also increased our work with nonprofit executives, adding monthly affinity group calls for new executives as well as more experienced leaders. We laid the groundwork for Catalyst, MNA's leadership development program, and developed seven online learning partnerships – not knowing online programming would become so central to MNA in 2020.

With seed funding from the Headwaters Foundation, MNA had the opportunity to launch a Nonprofit Innovation program to focus on innovative ways for nonprofit leaders to increase operational efficiencies, particularly in the area of strategic financial leadership. In the first year, MNA listened extensively to the most pressing operational needs of our members and other nonprofit leaders. Armed with information, the innovation program began to develop and offer curated tools ranging from an assessment of operating processes to redesigns and toolkits that support more efficient operations. The innovation program is data driven and system focused, intended to drive meaningful change in ways that bring business-oriented design processes to bear on the compelling social missions represented by MNA members and the larger nonprofit community.

MNA hit a number of new milestones with our members in 2019: most ever attendance at an MNA Conference (449), significant growth in digital audiences including Facebook, Twitter, and Instagram, the launch of our Business to Business Directory for Affiliate Members, a revamped website, and a new e-news platform for more streamlined distribution of information and resources. Overall, our charitable nonprofit member base, the core of the Association, grew to 653 members.

We also began taking steps to become a more diverse Association. The MNA Board of Directors prioritized adding two tribal nonprofit leaders to the Board. The staff began to work intentionally on the internal culture of the organization through both self-study and consultation. With these initial changes we are seeing the benefits of more diverse perspectives as we take steps to be an Association for all of Montana.

As we write this letter today, several months into 2020, the world has changed for all of us. What we didn't know as we closed the door on 2019 was just how much MNA would be looked to for information, resources, solutions, and leadership in 2020. Nor did we know the extent to which we were poised to deliver what was most needed in the moment because of the growth we saw in 2019. As an Association we are fortunate beyond measure in our partnerships and in the network of relationships that allow us to champion the common good in Montana. More than anything, we are fortunate to represent our members, those nonprofits scattered across Montana who – by virtue of association – allow all of us to belong to something larger as we work together for the betterment of this beautiful state we call home.

Thank you for being a part of Montana Nonprofit Association.



A handwritten signature in black ink, appearing to read "Liz Moore".

Liz Moore
Executive Director

A handwritten signature in black ink, appearing to read "Jason Rittal".

Jason Rittal
MNA Board Chair





TEAM MNA

Dina Fike
Digital Communications Associate

Emily Flemming
Membership & Resource
Development Director

Michael Hale
Program Associate


Adam Jespersen
Director of Nonprofit Innovation

Barbara Knutson
Office Manager

Leandra Lipson
Partner Relations &
Communications Manager

Liz Moore
Executive Director

Shelby Rogala
Professional and Organizational
Development Manager



BOARD OF DIRECTORS

C.B. Pearson, Chair
*Senior Vice President,
M+R Strategic Services*
Missoula

Jason Rittal, Vice Chair
Deputy Director, MACO
Helena

Susan Denson Guy, Secretary
*Executive Director, Emerson
Center for the Arts and Culture*
Bozeman

Sherman Weimer, Treasurer
*Executive Director,
Eastern Montana Industries*
Miles City

Jim Bennett
*Relationship Manager,
Northwest Farm Credit Services*
Havre

Dee Inoronato
Director of Strategy, Intermountain
Bigfork

Larry Johnson
Attorney at Law
Hamilton

Leslie Modrow
*Development Director,
Billings Public Library Foundation*
Billings

Alison Paul
*Executive Director,
Montana Legal Services*
Helena

Rob Tallon
*Executive Director,
Reach, Inc.*
Bozeman

Andrea Vernon
*Executive Director of Montana,
Campus Compact and Director
of Civic Engagement*
Missoula

Sherman Weimer
*Executive Director,
Eastern Montana Industries*
Miles City

Bob Wilmouth
*President,
Rocky Mountain College*
Billings

Dawn Wrigg
Partner, Rudd & Company PLLC
Helena

PROFESSIONAL AND ORGANIZATIONAL DEVELOPMENT

1,440 nonprofit professionals and board members from across Montana, including **400** from rural communities, participated in one of **66** unique training events held by MNA.

173 individuals took part in
9 free New Board Member trainings.

2 new Affinity Groups launched with **48** and **36** individuals from across the state taking part.

Additionally, MNA expanded its on-demand offerings with **3** presentations and **8** custom workshops for a total of **248** attendees.

449 nonprofit leaders from all corners of Montana convened at MNA's Annual Conference, **BREAKTHROUGH**, in Billings making it the highest attended conference in MNA's history.

And, for the first time ever, MNA and the Association of Fundraising Professionals (AFP) joined forces to honor philanthropic and nonprofit impact in Montana by merging MNA's Annual Conference Reception and AFP's Annual Awards Dinner into one meaningful event. Together, the Associations honored individuals and organizations that embody the spirit of philanthropy and nonprofit leadership in the state.

11 awards were given in total.





WHAT MEMBERS HAD TO SAY

“It is important to have these chances to help us continue to do good work.”

95%

of attendees agreed or strongly agreed MNA trainers had a deep level of expertise in the content area.

“Wow. I loved so much about this webinar.”




90%

of attendees agreed or strongly agreed MNA workshops were immediately applicable and relevant for their organization

“You made the information stick.”

82%

of attendees agreed or strongly agreed MNA sessions provided tangible next steps to put into use at their organization.





INNOVATION LAB

MNA's Innovation Lab launched in June 2019 to serve as the nucleus for developing and deploying innovative solutions and creative processes that tangibly increase Montana nonprofits operational capacity and ability to carry out their missions. Pinpointed on innovating administrative and back office functions of nonprofit organizations, the Lab's goal is to spark innovation by:

- **Utilizing, sharing, and supporting full adoption of best-practice systems, technologies, and solutions for nonprofit functions**
- **Teaching and consulting on administrative activities, such as sound financial management, planning, and operations**
- **Utilizing established collaborative frameworks like Lean Management and Human-Centered Design to initiate learning, growth, and new solutions to common nonprofit challenges.**

In its first five months of operation, MNA's Innovation Lab completed a comprehensive listening and discovery process, finalized its frameworks and approaches to process improvement and innovation, and began building its design team, program, and offerings for 2020.

In 2020 the Lab is poised to provide nonprofits with tools, training, and consultation to improve internal competence in the areas of Financial Leadership and Targeted Capacity Building.



Adam Jespersen
Director of Nonprofit Innovation

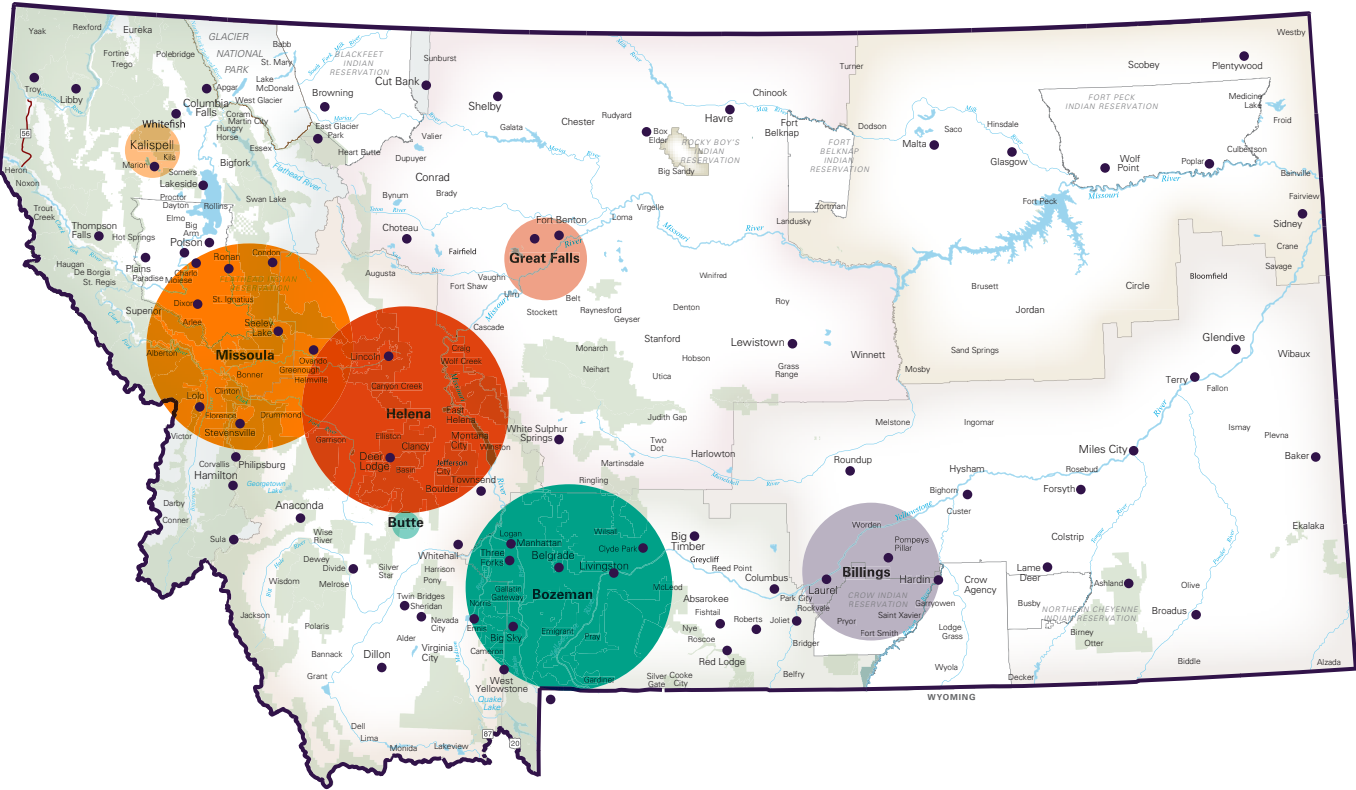
MEMBERSHIP

MNA's **653** *charitable nonprofit members are the core of the Association.*

In addition, MNA enjoys the partnership of **107 affiliate members**, many of whom provide support services to the nonprofit community, as well as the support of **11 sustaining members** that provide significant investment in MNA's mission.

2019 MEMBERSHIP MAP

| | LOCATION | # | % |
|--|-------------|-----|------|
| | Rural | 255 | 39% |
| | Helena | 91 | 14% |
| | Missoula | 94 | 14% |
| | Bozeman | 67 | 10% |
| | Billings | 65 | 10% |
| | Great Falls | 38 | 6% |
| | Kalispell | 26 | 4% |
| | Butte | 17 | 3% |
| | Total | 653 | 100% |



Retention Rate
82.7%

Nonprofit Members
653

Affiliate Members
107

Sustaining Members
11

Total Members
771

Rural Members
39%

PRODUCTS & SERVICES

Through group discounts and MNA's business partners...

- ▶ **86** members gained **40% to 60%** off of their unemployment costs with First Nonprofit Group.
- ▶ **112** members saved **85%** off an annual subscription to GrantStation.
- ▶ **273** members posted a job on MNA's Nonprofit Job Board at an average discount of **69%**.
- ▶ MNA's Group Benefit Trust provided **31** nonprofit organizations and their **870** employees plus several hundred dependents with **quality, affordable healthcare**. On average nonprofits saved **8% to 10%** of their medical insurance costs equating to approximately **\$360,000** saved for nonprofits through the Trust.
- ▶ MNA launched a Montana-specific Business-to-Business Directory connecting nonprofits in the state to vital services and resources.



The background features abstract geometric shapes, primarily triangles and polygons, in shades of teal, orange, and purple. These shapes are scattered across the page, with some appearing as large, overlapping forms and others as smaller, isolated elements. The overall effect is a modern, geometric aesthetic.

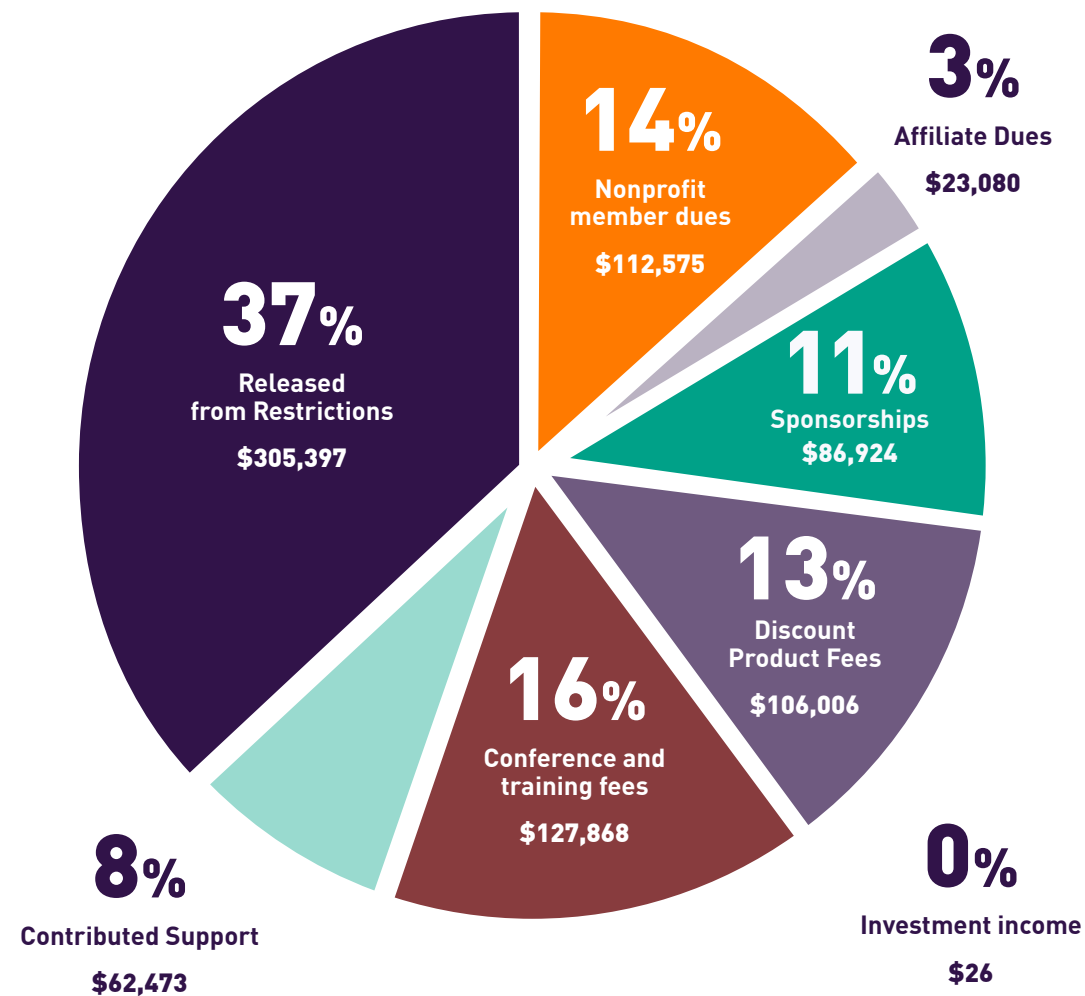
FINANCIALS

MNA's operational revenue in 2019 equaled **\$824,349**
with an increase of unrestricted net assets of **\$66,815.**

Overall change in net assets was **\$379,818**

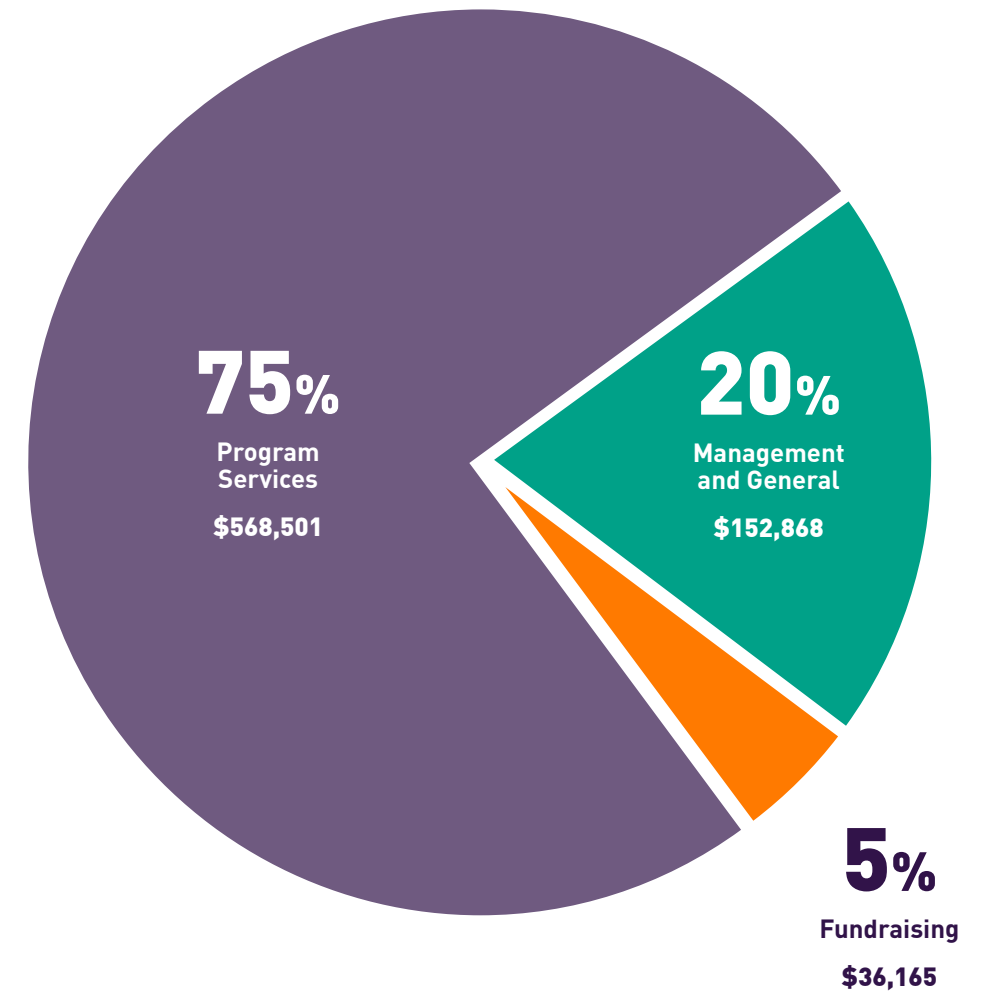
Due to receiving multi-year grants,
year-end net assets were **\$459,402.**

REVENUE AND SUPPORT



TOTAL REVENUE & SUPPORT

\$824,349



TOTAL EXPENSES

\$757,534

75% of MNA's expenditures were used for program services including nonprofit advocacy, nonprofit management, and leadership capacity, producing research and information about the nonprofit sector, and providing nonprofits across the state with an array of cost-saving products and services. **20%** of expenditures were used for administration and **5%** for fundraising.

STATEMENTS OF FINANCIAL POSITION

(AUDITED)

(REVIEWED)

ASSETS

2019

2018

CURRENT ASSETS

Cash and cash equivalents

\$ 264,500

\$ 35,865

Accounts receivable

26,429

34,907

Grants receivable, current

164,910

50,000

Prepaid Expenses

5,700

-

Total Current Assets

461,539

120,772

FIXED ASSETS

Property and equipment

104,828

84,840

Less accumulated depreciation and amortization

(78,538)

(68,595)

Total Current Assets

26,290

16,245

OTHER ASSETS

Refundable unemployment reserve

6,430

6,230

Grants receivable, long term

99,000

19,539

Total Other Assets

105,430

25,769

TOTAL ASSETS

\$593,259

\$162,786

LIABILITIES AND NET ASSETS

CURRENT LIABILITIES

Accounts payable

\$ 20,749

\$ 3,110

Accrued payroll liabilities

40,690

30,243

Deferred revenue

72,418

49,849

Total Current Liabilities

133,857

83,202

NET ASSETS

Without donor restrictions

76,593

9,778

With donor restrictions

382,809

69,806

Total Net Assets

459,402

79,584

TOTAL LIABILITIES AND NET ASSETS

\$593,259

\$162,786

STATEMENTS OF ACTIVITIES

(AUDITED)

(REVIEWED)

2019

2018

| | Total | Total | | |
|----------------------------------|------------------|-------------------|-------------------|------------------|
| REVENUE AND SUPPORT | | | | |
| Nonprofit member dues | \$ 112,575 | - | \$ 112,575 | \$ 117,901 |
| Affiliate member dues | 23,080 | - | 23,080 | 21,185 |
| Sponsorships | 86,924 | - | 86,924 | 86,838 |
| Discount product fees | 106,006 | - | 106,006 | 94,410 |
| Conference and training fees | 127,868 | - | 127,868 | 115,660 |
| Contributed support | 62,473 | 618,400 | 680,873 | 140,641 |
| Investment income, net | 26 | - | 26 | 28 |
| Released from Restrictions | 305,397 | (305,397) | - | - |
| TOTAL REVENUE AND SUPPORT | 824,349 | 313,003 | 1,137,352 | 623,657 |
| EXPENSES | | | | |
| Program Services | 568,501 | - | 568,501 | 494,657 |
| Management and general | 152,868 | - | 152,868 | 84,465 |
| Fundraising | 36,165 | - | 36,165 | 36,470 |
| TOTAL EXPENSES | 757,534 | - | 757,354 | 615,592 |
| CHANGE IN NET ASSETS | 66,815 | 313,003 | 379,818 | (38,929) |
| Net assets at beginning of year | 9,778 | 69,806 | 79,584 | 118,513 |
| NET ASSETS AT END OF YEAR | \$ 76,593 | \$ 382,809 | \$ 459,402 | \$ 79,584 |

NONPROFIT MEMBERS

9 Energies Inc
A Carousel for Missoula Foundation Inc.
Absaroka Beartooth Wilderness Foundation
Absarokee Lending Library
Action Inc.
Adult Resource Alliance of Yellowstone County
Adventure Cycling Association
Adventure Scientists
AERO - Alternative Energy Resources Organization
Alberta Bair Theater
Alliance for Youth, Inc.
Alpine Artisans, Inc.
Alternatives, Inc.
Amani for Africa USA Foundation
American Indian Institute
American Jobs for America's Youth, Montana Chapter
American Prairie Reserve
American Red Cross of Montana
Anaconda Community Foundation
Angel's Wing of Montana
Animal Wonders, Inc
Animals 4 Therapy
Archie Bray Foundation
Area II Agency on Aging
Artists and Craftsman of the Flathead
Arts Council of Big Sky
Arts Missoula
ASPEN- Abuse Support & Prevention Education Network
Back Country Horsemen of the Flathead
Back Country Squatters Nonprofit
Bannack Association
Bear Paw Development Corporation
Beartooth Front Community Forum
Beartooth Humane Alliance
Beartooth Mountain Christian Ministries
Beartooth Recreational Trails Association, Inc.
Beaverhead Trails Coalition
Befrienders, Inc.
Behavioral Health Alliance of MT
Belgrade Community Coalition
Benefis Health System Foundation
Benefis Teton Medical Center Foundation
Big Brothers Big Sisters NW Montana
Big Brothers Big Sisters of Helena and Great Falls
Big Brothers Big Sisters of Yellowstone County
Big Hole River Foundation, Inc.
Big Hole Watershed Committee
Big Horn Hospital Association
Big Sky Bravery
Big Sky Community Organization
Big Sky Discovery Academy
Big Sky Economic Development Corporation
Big Sky Institute for the Advancement of Nonprofits

Big Sky Science Education Enhancement
Big Sky Senior Services, Inc.
Big Sky Youth Empowerment Project
Bigfork Art and Cultural
Big Fork Ladies Service Club (BLSC)
Bigger Sky Kids
Bighorn Valley Health Center
Bike Walk Montana
Billings Amateur Hockey League
Billings Child Care Association
Billings Clinic
Billings Community Foundation
Billings Leadership Foundation
Billings Mediation Center
Billings Public Library Foundation
Billings Symphony Society
Billings TrailNet (Bikenet)
Biomimicry Institute
Bitter Root Water Forum
Bitter Root Cultural Heritage Trust
Bitter Root Resource Conservation & Development Area
Bitterroot CASA, Inc.
Bitterroot Performing Arts Council
Bitterroot Trail Preservation Alliance
Bitterrooters for Planning
Blackfoot Challenge
Blue Mountain Clinic, Inc.
Bob Marshall Wilderness Foundation Inc.
Boyd Andrew Community Services
Boys and Girls Club of Carbon County
Boys and Girls Club of Lewistown
Boys and Girls Club of Richland County
Boys and Girls Club of the Flathead Reservation & Lake County
Boys and Girls Club of the Northern Cheyenne Nation
Boys and Girls Clubs of Yellowstone County
Bozeman Area Community Foundation
Bozeman Art Museum
Bozeman Health Foundation
Bozeman Public Library Foundation Inc
Bozeman Senior Center, Inc.
Bozeman Symphony Society
Bridgercare
Brightways Learning
Broadwater Community Health Foundation, Inc.
Buckets of Love, Inc
Burton K. Wheeler Center
Butte 4-C's
Butte Cares, Inc
Butte Emergency Food Bank
Butte Rescue Mission
C.M. Russell Museum
Camp Bighorn, Inc.
Camp Mak-A-Dream

Camp Promise/Big Sky Bible Camp
Cancer Support Community Montana
Carbon County Arts Guild & Depot Gallery
Carbon/Stillwater Community & Senior Programs
Career Futures, Inc.
Career Training Institute
Career Transitions
Carter County Museum
CASA for Kids, Inc. Flathead County
CASA of Hill County, Inc.
CASA of Lake & Sanders Counties
CASA of Lewis & Clark and Broadwater Counties
CASA-CAN Children's Advocate Network
Cascade County Law Clinic
Catholic Foundation of Eastern Montana
Center for Large Landscape Conservation
Center for Restorative Youth Justice (CRYJ)
Central Asia Institute
Child Bridge, Inc.
Child Care Connections
Child Care Resources
Child Development Center
Children's Alliance of Montana
Children's Museum of Montana
Cinnabar Foundation
Citizens For A Better Flathead
Clark Fork School, Inc.
Clark Fork Valley Hospital Foundation
Clearwater Resource Council
Code Girls United
Cody Dieruf Benefit Foundation
Columbus Community Foundation
Community 7 Television
Community Closet
Community Counseling and Correctional Services, Inc.
Community Dispute Resolution Center of Missoula County
Community Food & Agriculture Coalition
Community Foundation for a Better Bigfork
Community Leadership & Development Inc
Community Option Resources Enterprises, Inc.
Conrad Mansion Museum
Conservatory ASL Northwest
Cottonwood ALC, Inc
Creative Arts Council
Crosscut Mountain Sports Center
Custer Network Against Domestic Abuse
Daly Hospital Foundation
Daly Mansion Preservation Trust
Darby Schools Excellence Fund
Dawson College Foundation
Dawson County Domestic Violence Program
Dawson County Healthy Communities Coalition
Deep Bay Center

Developmental Educational Assistance Program
Disability Rights Montana
District II Alcohol & Drug Program CLOSED
Dog Tag Buddies
Dolce Canto, Inc.
Domestic and Sexual Violence Services of Carbon County
Donald and Carol Roberts Foundation
Dream Adaptive Recreation, Inc.
Dress for Success Billings
Eagle Mount Bozeman
Eagle Mount Great Falls
Earthtone Outside MT
Eastern Montana CASA-GAL Inc.
Eastern Plains Economic Development Corporation
Easterseals-Goodwill Northern Rocky Mountain, Inc.
Ecology Project International
Education Foundation for Billings Public Schools
Emerson Center for the Arts and Culture
Emma's House
Empower MT
Energy Share of Montana
Evergreen Kids Corner
ExplorationWorks!
Families First Learning Lab
Families In Partnership Inc
Families with Heart
Family Connections
Family Promise of Gallatin Valley, Inc.
Family Promise of Great Falls, Inc.
Family Promise of Greater Helena
Family Promise of Yellowstone Valley
Family Service, Inc.
Family Support Network
Family Tree Center
Farm Hands-Nourish The Flathead
Flathead Community Foundation
Flathead Food Bank, Inc.
Flathead Lakers
Flathead Lutheran Bible Camp
Flathead STEAM Alliance
Flathead Valley Sports
Florence Crittenton Home & Services
Forward MT Foundation
Foundation for Animals
Foundation for Community Care
Foundation for Community Health
Foundation for the Diocese of Helena
Foy's to Blacktail Trails
Freedom in Christ Prison Ministry
Friends of Dornix Park
Friends of the Flathead Avalanche Center
Friends of the Library (Livingston)
Friends of the Missouri River Breaks Monument

Friendship Center of Helena, Inc
Friendship House of Christian Service
Front Range CASA/GAL
Future West, Inc.
Gallatin County Love in the Name of Christ
Gallatin Historical Society
Gallatin River Task Force
Gallatin Valley Farm to School
Gallatin Valley Land Trust
Gallatin Valley YMCA
Gals Going Global
Garden City Ballet
Garden City Harvest
Girl Scouts of Montana and Wyoming
Girls on the Run Flathead Valley
Glacier Country Tourism
Glacier County Historical Museum
Glacier National Park Conservancy
Glacier Symphony & Choral
Glacier-Two Medicine Alliance
Global Village, Inc.
Good Samaritan Ministries Thrift Store
Grandstreet Theatre
Great Burn Conservation Alliance
Great Fall's Children's Receiving Home
Great Falls Clinic Legacy Foundation
Great Falls Public Schools Foundation
Great Falls Senior Citizen's Center
Great Falls Symphony Association
Great Northern Development Center
Greater Gallatin United Way
Greater Montana Foundation
Greater Polson Community Foundation
Greater Yellowstone Coalition
Grizzly & Wolf Discovery Center
H.E.A.R.T. Ministries
Habitat for Humanity Great Falls Area
Habitat for Humanity Mid-Yellowstone Valley
Habitat for Humanity of Gallatin Valley
Habitat for Humanity of Missoula
Habitat for Humanity of Ravalli County
Hamilton Players, Inc.
Haven
Headwaters Foundation
Healthy Mothers Healthy Babies, The Montana Coalition, Inc.
Heart of the Rockies Initiative
Heart of the Valley Animal Shelter
Hearts and Hands Hospice
Helena Area Community Foundation
Helena Area Habitat for Humanity
Helena Civic TV
Helena Community Connections Inc
Helena Education Foundation
Helena Family YMCA
Helena Food Share
Helena Guardians
Helena Indian Alliance
Helena Symphony Society

Helena Tourism Business Improvement District
Help Center, Inc.
HELP Committee and Boys and Girls Club of the Hi-line
Hi-Line Home Programs, Inc.
Historical Museum at Fort Missoula
Hockaday Museum of Art
Holter Museum of Art
Home ReSource
Homeword, Inc.
Human Resource Development Council (HRDC), District 4
Human Resource Development Council (HRDC), District 7
Human Resource Development Council (HRDC), District 9
Human Science Institute, Inc.
Humane Society Lake County Area Inc
Humane Society of NW Montana
Humane Society of Western Montana
Humanities Montana
Identity Incorporated
Imagine IF Library Foundation
Indian Law Resource Center
Inner Roads, Inc
Intermountain Children's Home and Services
Intermountain Opera Association of Bozeman
International Organic Inspectors Association
Invasive Species Action Network
Jeannette Rankin Peace Center
Jefferson Valley Community Foundation
Job Connection, Inc.
Kiel's Konnection
Kiwanis Foundation of Montana
Kootenai Heritage Council, Inc.
Kootenai River Development Council
L.P. & Teresa Anderson Foundation
Lake County CDC
Lake County Council on Aging
Laurel Montana Community Foundation Inc
LaVie: An Early Pregnancy Clinic
Leadership Montana
Lewis & Clark Humane Society
Lewis and Clark Library Foundation
Lewis and Clark Literacy Council
Lewis and Clark Trail Heritage Foundation
Libby Community Garden
Liberty Place, Inc.
Life Houses, Inc.
Lighthouse Christian Home & Services, Inc
Lincoln County Transportation Service, Inc.
Literacy Bitterroot
Living Art of Montana
Livingston Food Resource Center
Livingston Healthcare Foundation
Maclean Animal Adoption Center
Madison River Foundation, Inc.
Madison Valley Medical Center Foundation
Mahmowi
MAI WAH Society
MAPS Media Institute
Marion Fire Auxiliary Inc

Mason Moore Foundation
MASS Design Group
MCA Education Foundation
Meagher County Stewardship Council
Merlin Collaborate, Consult & Community
Miles City Academy
Miles City Area Community Fund
Milk River Inc.
Mineral County Economic Development
Mission Mountain Enterprises, Inc.
Mission Valley Aquatics & Fitness
Mission Valley Ice Arena Association
Missoula Aging Services
Missoula Area Youth Hockey Association
Missoula Art Museum
Missoula Butterfly House and Insectarium
Missoula Children's Theatre
Missoula Community Access Television Inc.
Missoula Community Foundation
Missoula Downtown Foundation
Missoula Education Foundation
Missoula Food Bank
Missoula Housing Authority
Missoula Interfaith Collaborative
Missoula Manor Homes
Missoula Ravalli Transportation Management Association, Inc
Missoula Transportation and Restoration Museum
Missoula Writing Collaborative
MoFi (Montana Community Development Corporation)
MonDak Heritage Center
Montana 4-H Foundation
Montana A Cappella Society
Montana Amateur Sports, Inc. dba Big Sky State Games
Montana Aquatic Resources Services, Inc.
Montana Association for the Blind
Montana Association of Symphony Orchestras
Montana Audubon
Montana Budget and Policy Center
Montana CASA GAL
Montana Center for Compassion Education (MCCE)
Montana Chamber Foundation, Inc.
Montana Child Care Resource & Referral Network
Montana Coalition Against Domestic & Sexual Violence
Montana College Attainment Network
Montana Conservation Corps
Montana Cooperative Development Center
Montana Council for Exceptional Children
Montana Council of Teachers of Mathematics
Montana Council on Developmental Disabilities
Montana Cowboy Hall of Fame & Western Heritage Center, Inc
Montana Creativity Quest - Montana Destination
Imagination
Montana Credit Unions for Community Development
Montana Economic Developers Association
Montana Environmental Information Center
Montana Farm Bureau Foundation
Montana FFA Foundation Incorporated
Montana Food Bank Network

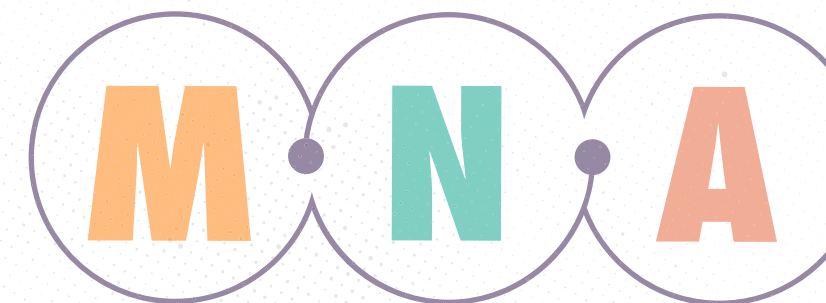
Montana Free Press
Montana Health Professionals for a Healthy Climate
Montana Healthcare Foundation
Montana History Foundation
Montana Horse Welfare Council
Montana Independent Living Project
Montana Innocence Project
Montana Justice Foundation
Montana Land Reliance
Montana Law Enforcement Museum
Montana Learning Center of Canyon Ferry Lake
Montana Legal Services Association
Montana Library Association, Inc.
Montana Mediation Association
Montana Medical Association Foundation
Montana Meth Project
Montana Mouthful LTD
Montana Natural History Center
Montana Operation Lifesaver, Inc.
Montana Oral Health Foundation
Montana Outdoor Science School
Montana Police Protective Association Foundation
Montana Pork Producers Council
Montana Post Secondary Educational Opportunities Council
Montana PTA
Montana Public Health Association
Montana Raptor Conservation Center
Montana Renewable Energy Association
Montana School for the Deaf and the Blind
Montana Science Center
Montana Section of the American Water Works Association
Montana Shares
Montana State University - Billings Foundation
Montana State University- Northern Foundation
Montana Supporting Military
Montana Tech Foundation
Montana United Indian Association
Montana Veterans Foundation
Montana Warriors on the Water
Montana Watershed Coordination Council
Montana Weed Control Association
Montana Wilderness Association
Montana Wildlife Federation
Montana Woman Foundation
Montana's Peer Network
Montanical Garden
Moonlight Community Foundation
Morning Star Expeditions, Inc.
Mountain Home Montana, Inc.
Mountain Journal, Inc
Musselshell Valley Community Foundation
NACOC Financial Services
Nate Chute Foundation
National Alliance on Mental Illness of Montana (NAMI)
National Center for Appropriate Technology - N.C.A.T.
National Indigenous Women's Resource Center, Inc.
National Museum of Forest Service History, Inc.

Native American Development Corporation
 Nature-Link Institute
 Neighbor To Neighbor
 Neighborworks Great Falls
 NeighborWorks Montana
 Nibs and Edna Allen Foundation
 Ninepipes Museum of Early Montana
 North American Indian Alliance
 North Central Area Agency on Aging
 North Central Independent Living Services
 North Lake County Library Foundation
 North Valley Community Park Development
 North Valley Food Bank
 North Valley Hospital Foundation
 Northeast Montana Health Services Charitable Foundation
 Northern Plains Resource Council
 Northwest Montana Head Start
 Northwest Montana United Way, Inc.
 NOVA Center for the Performing Arts
 Nurturing Center, Inc.
 Old Montana Prison and Auto Museums
 Old Trail Museum
 Oneness Project
 Open Aid Alliance
 Opportunities, Inc.
 Opportunity Link, Inc.
 Opportunity Resources, Inc.
 Organic Advisory and Education Council
 Orphan Girl Children's Theatre
 P.A.R. (Power for Abundant Recovery Ministries)
 Parents Let's Unite for Kids - CLOSED 9.2019
 Paris Gibson Square
 Park County Community Foundation
 Park County Environmental Council
 Park County Friends of the Arts
 Park County Senior Citizens Center
 Partners Hope Foundation
 Peers Unlimited
 PFLAG Lewis & Clark County Chapter
 Planned Parenthood of Montana
 Plant a Seed READ
 Plentywood Educational Alumni Foundation
 Pompeys Pillar Historical Association
 Pondera Arts Council
 Poverello Center, Inc.
 Powell County Literacy Program
 Prairie Community Hospital Foundation
 Presbyterian Church USA dba Peace Place
 Prickly Pear Land Trust
 Pride Foundation
 Project Ascent
 Project Hope
 Providence Montana Health Foundation
 Pull Together Now
 Ranchers Stewardship Alliance
 Ravalli County Council on Aging
 Ravalli County Museum and Historical Society
 Reach Higher Montana

Reach Out & Care Wheels, Inc.
 Reach, Inc.
 Recycle Montana, Inc
 Red Ants Pants Foundation
 Red Lodge Area Community Foundation
 Red Lodge Rescue Foundation
 Red Willow Learning Center
 Region IV Family Outreach, Inc.
 Relational Wisdom 360
 Resource, Support and Development, Inc.
 Richland Opportunities, Inc.
 Rimrock
 RiverStone Health Foundation
 Riverstone School
 Roberts Community Foundation
 Rocky Mountain College
 Rocky Mountain Development Council, Inc.
 Rocky Mountain Elk Foundation
 Rocky Mountain Front Weed Roundtable
 Roots Family Collaborative
 Ruby Habitat Foundation
 Ruby Valley Healthcare Foundation
 Run Wild Missoula
 Rural Dynamics, Inc.
 Rural Employment Opportunities, Inc.
 SAFE Harbor, Inc.
 Sagebrush Food Pantry
 Salish Kootenai College Foundation
 Samaritan House, Inc.
 Sanders County Coalition For Families
 School Services of Montana
 Seeley Lake Community Foundation
 Seeley Lake Regional Center for Kinetic Sports
 Selway-Bitterroot Frank Church Foundation
 Shane Lalani Center for the Arts
 Shepherds Hand
 Sheridan Health Care Foundation
 Silver Bow Art
 Simulation in Motion Montana
 Sixth Judicial District CASA GAL
 Smelter City Family Development
 Soft Landing Missoula
 Soil and Water Conservation Districts of MT, Inc.
 South Central Montana Regional Mental Health Center
 Southeast Montana Area Revitalization Team (SMART)
 Southwest MT Community Health Center
 Southwestern Montana Family YMCA
 Sparrows Nest of NW MT
 Special K Ranch, Inc.
 Special Olympics Montana
 Spirit of Life Community Bike Shop
 St Catherine Family Health Care Clinic & PRC
 St. John's Lutheran Ministries
 St. John's United
 St. Labre Indian School Educational Association
 St. Peter's Health Foundation
 Stevensville Main Street Association
 Sula Country Life Club-Community Clubhouse

Summit Independent Living Center
 Sun River Watershed
 Sunburst Unlimited, Inc.
 Sunnyside Farms, Inc
 Sunrise Women's Clinic
 Supporters of Abuse Free Environments, Inc. (SAFE)
 Swan Valley Connections
 Sweet Grass Community Foundation
 Sweet Pea a Festival of the Arts
 Sweetgrass Development, EDD
 Tamarack Grief Resource Center
 Teller Wildlife Refuge
 The Art Center
 The Caring Foundation of Montana
 The Clay Studio of Missoula
 The Confluence Center
 The Montana Racial Equity Project
 The Myrna Loy
 The National Center for Unwanted Firearms
 The Nature Conservancy
 The O'Hara Commons & Sustainability Center
 The Parenting Place
 The Rosebud Foundation
 The Station Foundation
 The Traveling School
 Thermus Aquaticus Learning & Swim Center
 Thrive
 Toby's House Crisis Nursery, Inc
 Travelers' Rest Preservation & Heritage Association
 Treacy Foundation
 Treesource Inc
 Tri-County Firesafe Working Group
 Tumbleweed Runaway Program, Inc.
 Turning the Wheel Missoula
 United in Light, Inc
 United Way of Beaverhead
 United Way of Butte and Anaconda
 United Way of Cascade County
 United Way of Hill County
 United Way of Missoula County
 United Way of the Lewis & Clark Area
 United Way of Yellowstone County
 Upper Swan Valley Historical Society, Inc.
 Valley County Community Foundation
 Veterinary Initiative for Endangered Wildlife
 Victim-Witness Assistance Services Inc.
 Violence Free Crisis Line, Inc.
 Vital Ground Foundation
 Volunteers of America Northern Rockies
 Warriors and Quiet Waters
 Watershed Education Network
 WaterWorks Art Museum
 Watson Children's Shelter, Inc.
 West Mont
 West Yellowstone Foundation
 Western Heritage Center
 Western Montana Area VI Agency on Aging
 Western Montana Chapter for the Prevention of Elder Abuse

Western Montana Equine Rescue & Rehabilitation, Inc.
 Western Native Voice
 Western Sustainability Exchange
 Whitefish Community Foundation
 Whitefish Lake Institute
 Whitefish Legacy Partners
 Whitetail Ranch Center
 Wild Rockies Field Institute
 Wilderness Watch, Inc.
 Windhorse Equine Learning
 Women In Action
 Women's Opportunity Resource - W.O.R.D. CLOSED 3/31/20
 Women's Resource Community Support Center
 Women's Voices For The Earth
 World Montana
 Writing Coaches of Montana
 Yellowstone Art Museum
 Yellowstone Bighorn Research Association
 Yellowstone Boys and Girls Ranch Foundation
 Yellowstone CASA
 Yellowstone Club Community Foundation
 Yellowstone Ecological Research Center
 Yellowstone Forever
 Yellowstone Historic Center
 Yellowstone River Parks Association Inc.
 Yellowstone Valley Animal Shelter
 Yellowstone Wildlife Sanctuary
 Yes Youth Empowerment Services
 Youth Connections
 Youth Homes, Inc.
 Youth, Inc.
 YWCA Billings
 YWCA Helena
 YWCA Missoula
 YWCA of Great Falls / Mercy Home
 ZooMontana
 Zootown Arts Community Center



AFFILIATE MEMBERS

Allegra Marketing, Print, Mail
Arthur M. Blank Family Foundation (AMB West)
Aspen Communications
Associated Employers
Avitus Group
Barbara Knutson
Beartooth Business Consulting
Berkley Human Services
Big Sky Chamber of Commerce
Big Sky Philanthropic Advisors
Bullhook Community Health Center, Inc.
Carrie Miller Consulting, LLC
Cassie Carter
Chany Reon Ockert Consulting, LLC
Crowley Fleck PLLP
DIY Nonprofit PR
Dorcie Dvarishkis
Downtown Bozeman Partnership
E. Edwin and Joyce Eck
Edge Marketing + Design
Emily Flemming
Entre Technology Services
First Call Computer Solutions
First Nonprofit Companies
Flaherty Consulting
Frank Accounting & Consulting
Frontline Processing Corporation
Gianforte Family Foundation
Glacier County Regional Port Authority
Glendive Chamber of Commerce
GrantHub, a division of Foundant Technologies
GrantsMagic U
Halliday Associates
Hamilton Downtown Association
Harbor Compliance
Helena BID
Hello Soul
Hillary Selvin
HJ Hudson Consulting
Humble Twig LLC
ImaginELF Libraries
Incite! Consulting Group
Interstate Merchant Services
Jane Urbaska
Janna Lundquist Consulting
Julie Rodda
Junkermier, Clark, Campanella, Stevens PC
Kirk Utzinger
Lawrence D. Johnson; Attorney at Law
Leadership Outfitters
Local Resources
Marca R Gibson, CPA,CMA
Marti Kurth
Meetings Northwest, Inc

Missoula County Weed District & Extension
Montana Arts Council
Montana Association of Counties MACO
Montana Bankers Association
Montana Children's Trust Fund
Montana Community Foundation, Inc.
Montana High Tech Business Alliance
Montana Historical Society
Montana Media Lab
Montana Nursery & Landscape Association
Montana Organic Association
Montana Public Radio
Montana Society of CPA's
Montana State University Extension
Mountain-Pacific Quality Health
MSU Bozeman Office of Student Engagement
MSU Local Government Center
My Way 2 Help
Ned Cooney, Facilitator & Consultant
Nonprofit Impact
Nonprofit Legal Services LLC
Northbound Public Affairs, LLC
Now IT Matters
Park Side Credit Union
Paychex
PHIL
Red Lodge Area Chamber of Commerce
Richland County Health Department
Rural Economic Designs, LLC
S. G. Long and Company
Sage Solutions Nonprofit Consulting, LLC
sciGaia
Shelby Rogala
Sidney Chamber of Commerce
State-41 Media Solutions, LLC
Still Waters LLC
Strategies 360
Sue Talbot
Tech Impact
TessELearn
The Connection Project
The Dotted i
Theresa Doty
Third Sector Consulting Group, LLC
Travis Ballenger, Benefit Auctioneer
Trister, Ross, Schadler & Gold, PLLC
UM Experiential-Learning Career Services
University of Montana Campus Compact
Upper Canyon Outfitters
Verve Exchange Consulting
Westby Associates, Inc
Wipfli LLP
Wise Choices MT

SUSTAINING MEMBERS

Bloomerang
Eastern Montana Industries
Firespring
First Interstate Bancsystem Foundation
Leavitt Group
Liz Moore
MNA Group Benefit Trust
NorthWestern Energy
O.P. & W.E. Edwards Foundation
PayneWest Insurance
SCL Health Montana

CONTRIBUTORS

Andrea Vernon
Anonymous Household
Arthur M. Blank Family Foundation (AMB West)
Barbara Knutson
Bob Wilmouth
Bruce Day
Cargo Household
Claire Muller
Dennis and Phyllis Washington Foundation
E. Edwin and Joyce Eck
Headwaters Foundation
Jackie Muri
James and Linda Soft
Jean Ballantyne
John & Jasyn Harrington
Judy Held
Lawrence D.and Marg Johnson
Leslie Modrow
Liz Moore
M. J. Murdock Charitable Trust
Margaret Owens
Mary Peterson
Montana Community Foundation, Inc.
Montana Healthcare Foundation
Northwest Area Foundation
O.P. & W.E. Edwards Foundation
Oro Y Plata Foundation
Paul Pomerleau Houseould
Rapp Family Foundation
Scott Pankratz
Sheila Rice
Sue Talbot
Tallon Household
The Sample Foundation Inc
The Steele-Reese Foundation
Tuss Household
Wells Fargo Bank

SPONSORS

Anderson ZurMuehlen
Arthur M. Blank Family Foundation (AMB West)
Aspen Communications
Associated Employers
Association of Fundraising Professionals, MT Chapter
Bear Paw Development Corporation
Big Sky Chamber of Commerce
Billings Clinic
Billings Community Foundation
Billings Public Library Foundation
Bloomerang
Blue Cross Blue Shield of Montana
Boys and Girls Clubs of Yellowstone County
Dennis and Phyllis Washington Foundation
EBMS
ELAP Services, LLC
First Call Computer Solutions
First Interstate Bancsystem Foundation
First Nonprofit Companies
Foundation for Community Care
Foundant Technologies
Headwaters Foundation
Helena Area Community Foundation
Incite! Consulting Group
Junkermier, Clark, Campanella, Stevens PC
L.P. & Teresa Anderson Foundation
Leavitt Group
M+R Strategic Services
MDU Resources Foundation
Missoula Aging Services
MNA Group Benefit Trust
Montana Community Foundation, Inc.
Montana Correctional Enterprises
Montana Healthcare Foundation
NorthWestern Energy
O.P. & W.E. Edwards Foundation
Park County Community Foundation
PayneWest Insurance
Richland County Health Department
Rocky Mountain College
S. G. Long and Company
Sandra Anderson Fund
SCL Health Montana
Town Pump Hotels
Treacy Foundation
Wipfli LLP
Yellowstone Club Community Foundation

