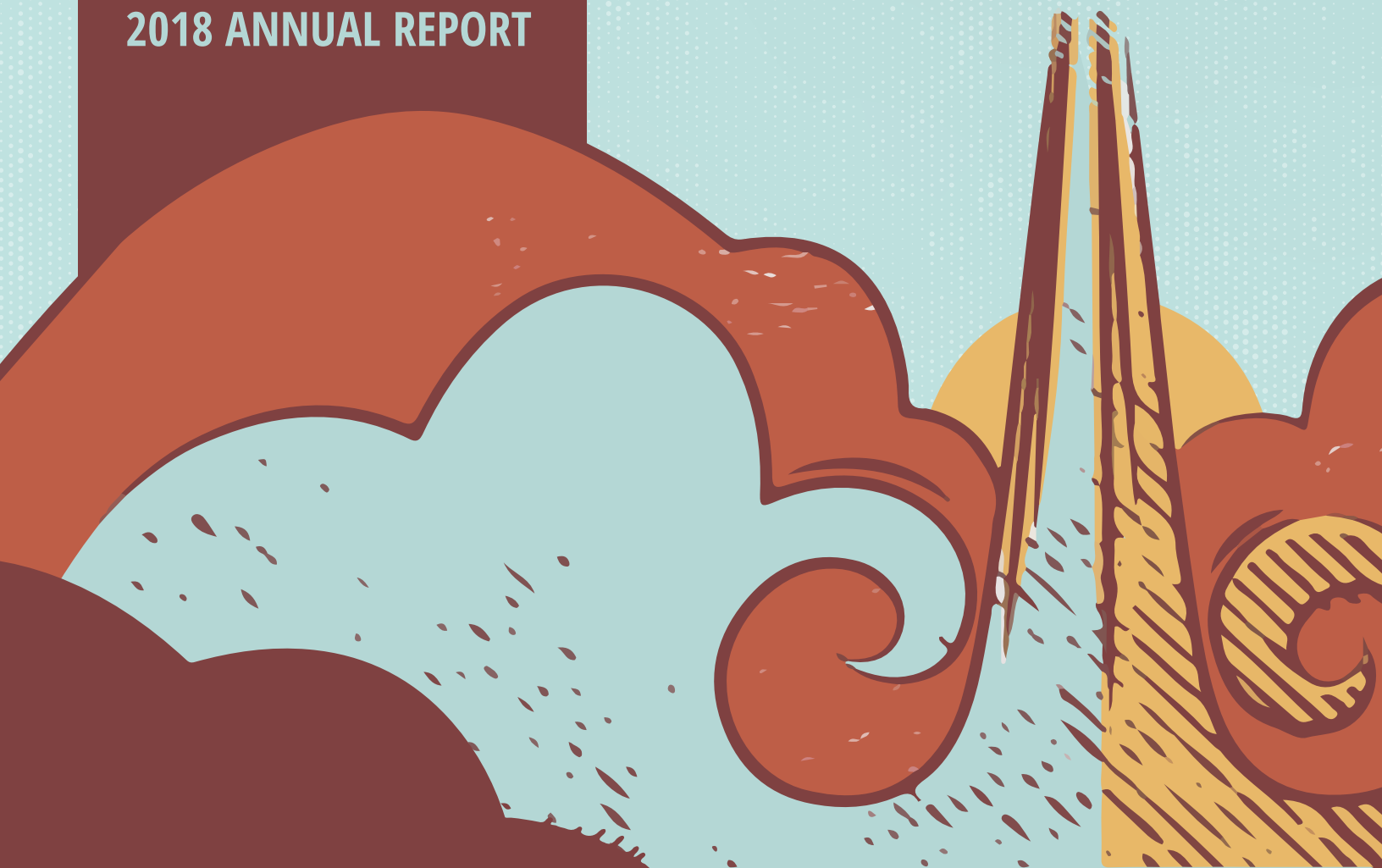
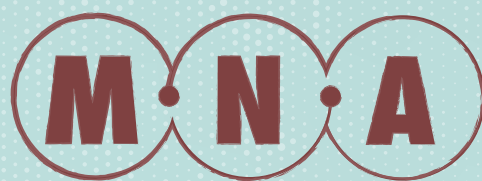



# IGNITE YOUR STRENGTHS FOR THE COMMON GOOD

2018 ANNUAL REPORT

MONTANA  
NONPROFIT  
ASSOCIATION





*“We are looking forward to great change both within MNA and in Montana’s larger nonprofit community as we bring operational innovation together with next generation leadership.”*



Montana Nonprofit Association

# EXECUTIVE DIRECTOR'S LETTER

*MNA's 2018 was future-focused!*

We started the year with a statewide listening tour, hosting more than a dozen focus groups in nine communities with almost 200 participants who shared their perspectives on the recruitment and retention challenges nonprofits face in the workforce and boardroom. From this emerged MNA's pilot training curriculum for nonprofit leaders interested in learning how to create a more effective multigenerational organization for staff and board members. Our premise was that nonprofits need to start by building a culture that meets the developmental needs of staff and board teams before changing up recruitment practices. From busting stereotypes to holding difficult conversations, pitching good ideas, creating career lattices, and understanding communication differences, MNA helped more than sixty nonprofit organizations learn how to implement organizational structures and practices that would increase their ability to be a top choice for potential employees and volunteers.

MNA's focus on Next Generation leadership carried through to the annual MNA Conference, Catalyst: Ignite your Strengths for the Common Good. More than 400 nonprofit board and staff leaders convened in Helena for the state's premier nonprofit networking and education event. Derrick Feldman, one of the preeminent voices in the nation on engaging millennials in the workplace, helped us understand the tremendous leverage nonprofits have to engage incoming generations because of our orientation to mission.

Internally MNA also underwent a "next generation" evolution as we welcomed two new members to the MNA team. Shelby Rogala joined as MNA's Professional and Organizational Development Manager, and Leandra Lipson came on as our Communications Manager. With that came changes to MNA's programs, look, and feel. We finalized the new MNA website, launched the Business to Business Directory, began to restructure the Nonprofit Management Series, and built our first curriculum for individuals not yet familiar with nonprofit volunteerism. "So You Wanna Be a Board Member" was developed and offered to community members interested in nonprofit board leadership.

We began to offer this intro to board service in communities as an add-on to our regular board leadership training. We now had a way to connect the dots when nonprofits said "We can't find board members," at the same time as emerging community leaders were asking "How do I get on a board?"

As we look toward 2019 we are well positioned to explore an opportunity to bring a more innovative approach to nonprofit capacity building. We have spent more than a year thinking about generational change, how nonprofits continually adapt but lack the risk capital needed for innovation, and how growth in technology has become a significant issue both in terms of workplace culture and operational effectiveness. Innovative capacity building seems the next logical step in nonprofit sustainability, and we are fortunate to have a partner interested in investing in this area. We are looking forward to great change both within MNA and in Montana's larger nonprofit community as we bring operational innovation together with next generation leadership, which might be best understood as human resource innovation!

We close the year looking forward to helping lead the renewal of the Montana Endowment Tax Credit during the 2019 Legislative Session. We are blessed with members, partners, and friends who are central to our effectiveness and our joy as we work together to strengthen Montana's nonprofits for the benefit of Montana's Communities. Thank you all.



Liz Moore  
Executive Director



CB Pearson, Chair  
MNA Board of Directors



## STAFF

### Emily Flemming

*Membership and  
Resource Development  
Director*

### Barbara Knutson

*Office Manager*

### Leandra Lipson

*Partner Relations and  
Communications Manager*

### Liz Moore

*Executive Director*

### Shelby Rogala

*Professional and Organizational  
Development Manager*

## BOARD OF DIRECTORS

### C.B. Pearson, Chair

*Senior Vice President  
M+R Strategic Services  
Missoula*

### Larry Johnson

*Attorney at Law  
Hamilton*

### DeeAnn Richardson

*Executive Director  
SAFE Harbor  
Ronan*

### Jason Rittal, Vice Chair

*Deputy Director  
MACO  
Helena*

### Matt Lundgren

*Executive Director  
Friendship House of Christian Service  
Billings*

### Rob Tallon

*Executive Director  
Reach, Inc.  
Bozeman*

### Susan Denson Guy, Secretary

*Executive Director  
Emerson Center for the Arts and Culture  
Bozeman*

### Leslie Modrow

*Development Director  
Billings Public Library Foundation  
Billings*

### Andrea Vernon

*Executive Director of Montana Campus  
Compact and Director of Civic Engagement  
University of Montana  
Missoula*

### Sherman Weimer, Treasurer

*Executive Director  
Eastern Montana Industries  
Miles City*

### Scott Pankratz

*Executive Director  
Ecology Project International  
Missoula*

### Bob Wilmouth

*President  
Rocky Mountain College  
Billings*

### Jim Bennett

*Executive Director  
Northern Alumni Foundation  
Havre*

### Dee Incoronato

*Director of Strategy  
Intermountain  
Bigfork*

### Alison Paul

*Executive Director  
Montana Legal Services  
Helena*

### Dawn Wrigg

*Partner  
Rudd & Company, PLLC  
Helena*





## PROFESSIONAL AND ORGANIZATIONAL DEVELOPMENT

---

*More than **1,300** nonprofit staff and board members from across Montana, including **360** from rural communities, participated in one of **forty-five** different training events held by MNA.*

Almost **200** nonprofit staff and board members in **9** communities attended an “Up Next” Focus Group as we conducted a comprehensive listening tour which served as the foundation for MNA’s Next Generation Leadership training program.

MNA piloted it’s Next Generation Leadership training program to **60** nonprofit staff and board members in **four** communities.

MNA’s 2018 Conference, Catlyst, brought the theme of Next Generation Leadership to the forefront for more than **400** executives, board members, nonprofit staff, and volunteers from all corners of the state.

Nearly **30%** of MNA’s trainings were attended by nonprofit leaders in rural communities, including **50** individuals that participated in Kaleidoscope, MNA’s eastern Montana conference.

MNA supported and connected **21** local nonprofit networks all across the state from the Flathead to Miles City to Hamilton, through monthly conference calls with network leaders.

*“We left ready to rethink  
how we recruit and foster a  
multigenerational team.”*

*“Extremely well done.”*

*“I really enjoyed this session  
(Building Tomorrows Nonprofit),  
learning from the speaker and  
other participants. Very useful  
and pertinent information.”*

The image features a photograph of two women sitting and talking, overlaid with a semi-transparent red filter. The woman on the left is older with short blonde hair, and the woman on the right is younger with long dark curly hair. At the bottom of the image is a stylized, comic-book-inspired border with swirling cloud-like shapes in white, brown, and yellow, some filled with diagonal hatching. A vertical beam of light or energy descends from the text area into this border.

*“I’m looking  
at the younger  
generation  
differently.”*

# MEMBERSHIP

MNA's **561** charitable nonprofit members are the core of the Association. In addition, MNA served **95** affiliate members, many of whom provide support services to the nonprofit community.



**NONPROFIT  
MEMBERS**

**561**

**AFFILIATE  
MEMBERS**

**95**

**TOTAL  
MEMBERS**

**656**

**RURAL  
MEMBERS**

**39%**





## PRODUCTS & SERVICES

*Through group discounts and MNA's business partners...*

**90** members gained **40%** to **60%** off of their unemployment costs with First Nonprofit Group.

**110** members saved **85%** off an annual subscription to GrantStation.

Over **250** members posted a job on MNA's Nonprofit Job Board at an average discount of **69%**.

MNA provided affordable, high-quality health benefits to **30** Montana nonprofit organizations serving just about **880** nonprofit employees plus, hundreds of their dependents through its Group Benefit Trust (GBT). On average, nonprofit organizations saved **8%** to **10%** of medical insurance costs by utilizing the GBT which equated to approximately **\$360,000 in savings.**

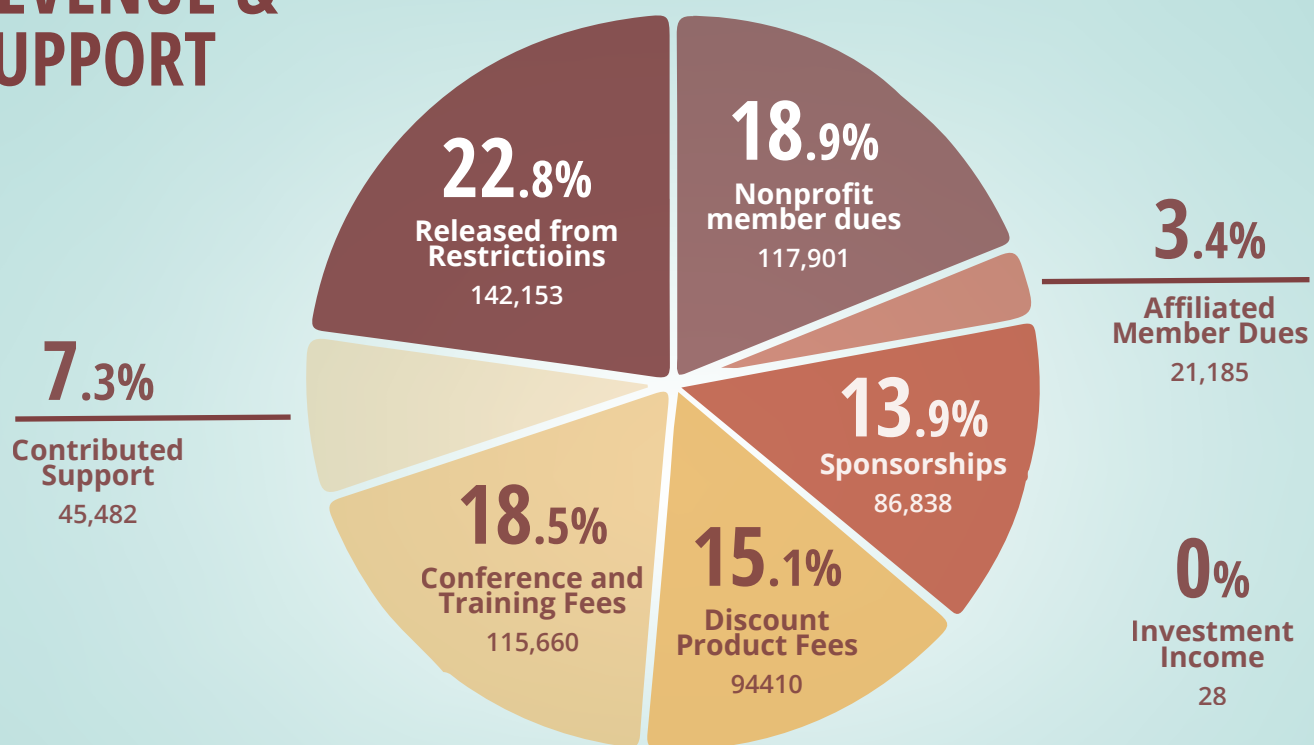
## FINANCIALS



*MNA's operational revenue in 2018 equaled **\$623,657** with an increase of unrestricted net assets of **\$8,065**. Overall change in net assets was **(\$38,929)** as multi-year restricted grants were released and spent down. Year end net assets were **\$79,584**.*

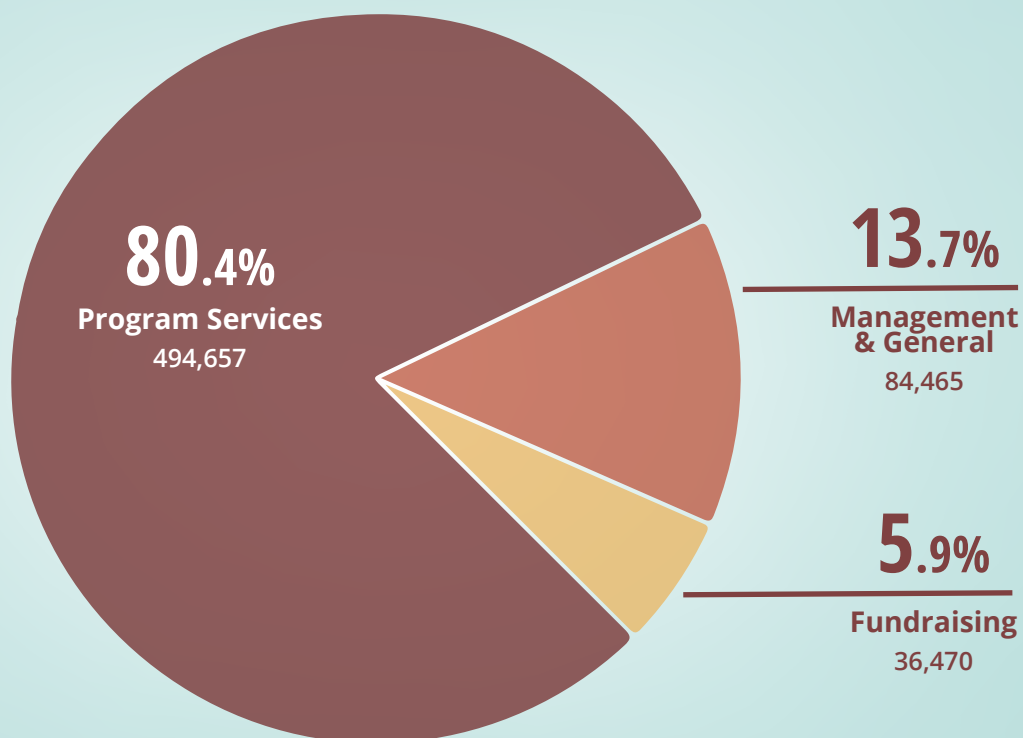


## REVENUE & SUPPORT



**80%** of MNA's expenditures were used for program services including nonprofit advocacy, nonprofit management, and leadership capacity, producing research and information about the nonprofit sector, and providing nonprofits across the state with an array of cost saving products and services. **14%** of expenditures were used for administration and **6%** for fundraising.

## EXPENSES



## STATEMENTS OF FINANCIAL POSITION

	(REVIEWED)	(AUDITED)	
ASSETS	2018	2017	
<b>CURRENT ASSETS</b>			
Cash and cash equivalents	\$ 35,865	\$ 31,774	
Grants receivable, current	50,000	85,500	
Accounts receivable	34,907	27,421	
Prepaid Expenses	-	368	
<b>Total Current Assets</b>	<b>120,772</b>	<b>145,063</b>	
<b>FIXED ASSETS</b>			
Property and equipment	84,840	84,840	
Less accumulated depreciation and amortization	68,595	61,327	
<b>Total Current Assets</b>	<b>16,245</b>	<b>23,513</b>	
<b>OTHER ASSETS</b>			
Refundable unemployment reserve	6,230	6,030	
Grants receivable, long term	19,539	29,609	
<b>Total Other Assets</b>	<b>25,769</b>	<b>35,639</b>	
<b>TOTAL ASSETS</b>	<b>\$162,786</b>	<b>\$204,215</b>	
<b>LIABILITIES AND NET ASSETS</b>			
<b>CURRENT LIABILITIES</b>			
Accounts payable	\$ 3,110	\$ 261	
Accrued payroll liabilities	30,243	36,781	
Deferred revenue	49,849	48,660	
<b>Total Current Liabilities</b>	<b>83,202</b>	<b>85,702</b>	
<b>NET ASSETS</b>			
Without donor restrictions	9,778	1,713	
With donor restrictions	69,806	116,800	
<b>Total Net Assets</b>	<b>79,584</b>	<b>118,513</b>	
<b>TOTAL LIABILITIES AND NET ASSETS</b>	<b>\$162,786</b>	<b>\$204,215</b>	



# MONTANA NONPROFIT ASSOCIATION

## STATEMENTS OF ACTIVITIES

YEARS ENDED DECEMBER 31, 2018 AND 2017

(REVIEWED)

(AUDITED)

	2018		2017	
	Without Donor Restrictions	With Donor Restrictions	Total	Total
<b>REVENUE AND SUPPORT</b>				
Nonprofit member dues	\$ 117,901	\$ -	\$ 117,901	\$ 117,993
Affiliate member dues	21,185	-	21,185	16,670
Sponsorships	86,838	-	86,838	96,406
Discount product fees	94,410	-	94,410	89,168
Conference and training fees	115,660	-	115,660	125,971
Contributed support	45,482	95,159	140,641	265,264
Investment income, net	28	-	28	256
Released from Restrictions	142,153	(142,153)	-	-
<b>TOTAL REVENUE AND SUPPORT</b>	<b>623,657</b>	<b>(46,994)</b>	<b>576,663</b>	<b>711,728</b>
<b>EXPENSES</b>				
Program Services	494,657	-	494,657	506,147
Management and general	84,465	-	84,465	95,084
Fundraising	36,470	-	36,470	50,632
<b>TOTAL EXPENSES</b>	<b>615,592</b>	<b>-</b>	<b>615,592</b>	<b>651,863</b>
<b>CHANGE IN NET ASSETS</b>	<b>8,065</b>	<b>(46,994)</b>	<b>(38,929)</b>	<b>59,865</b>
Net assets at beginning of year	1,713	116,800	118,513	58,648
<b>NET ASSETS AT END OF YEAR</b>	<b>\$ 9,778</b>	<b>\$ 69,806</b>	<b>\$ 79,584</b>	<b>\$ 118,513</b>

# NONPROFIT MEMBERS

## 9 Energies

A Carousel for Missoula Foundation  
Abuse Support & Prevention Education Network  
Adult Resource Alliance of Yellowstone County  
Adventure Cycling Association  
Alberta Bair Theater  
Alliance for Youth  
Alpine Artisans  
Alternative Energy Resources Organization  
Alternatives  
American Indian Institute  
Anaconda Community Foundation  
Animals 4 Therapy  
Archie Bray Foundation  
Area II Agency on Aging  
Artists and Craftsman of the Flathead  
Arts Council of Big Sky  
Arts Missoula  
Back Country Horsemen of the Flathead  
Bear Paw Development Corporation  
Beartooth Humane Alliance  
Beartooth Mountain Christian Ministries  
Beartooth Recreational Trails Association  
Beaverhead Trails Coalition  
Befrienders  
Behavioral Health Alliance of MT  
Belgrade Community Coalition  
Benefis Health System Foundation  
Benefis Teton Medical Center Foundation  
Big Brothers Big Sisters of Flathead County  
Big Hole River Foundation  
Big Hole Watershed Committee  
Big Horn Hospital Association  
Big Sky Bravery  
Big Sky Community Organization  
Big Sky Discovery Academy  
Big Sky Institute for the Advancement of Nonprofits  
Big Sky Science Education Enhancement  
Big Sky Senior Services  
Big Sky State Games  
Big Sky Youth Empowerment Project  
Bigfork Art and Cultural  
BigFork Ladies Service Club  
Bigger Sky Kids  
Bike Walk Montana  
Billings Amateur Hockey League  
Billings Child Care Association  
Billings Community Foundation  
Billings Public Library Foundation  
Billings Symphony Society  
Billings TrailNet  
Biomimicry Institute  
Bitter Root Cultural Heritage Trust  
Bitter Root Resource Conservation & Development Area  
Bitter Root Water Forum

## Bitterroot CASA

Bitterroot Performing Arts Council  
Bitterroot Trail Preservation Alliance  
Bitterrooters for Planning  
Blackfoot Challenge  
Blue Mountain Clinic  
Boyd Andrew Community Services  
Boys and Girls Club of Carbon County  
Boys and Girls Club of Lewistown  
Boys and Girls Club of Richland County  
Boys and Girls Club of the Northern Cheyenne Nation  
Boys and Girls Clubs of Yellowstone County  
Bozeman Area Community Foundation  
Bozeman Art Museum  
Bozeman Health Foundation  
Bozeman Public Library Foundation  
Bozeman Senior Center  
Bozeman Symphony Society  
Bridgercare  
Brightways Learning  
Broadwater Community Health Foundation  
Burton K. Wheeler Center  
Butte 4-C's  
Butte Cares  
Butte Emergency Food Bank  
C.M. Russell Museum  
Camp Bighorn  
Camp Mak-A-Dream  
Camp Promise  
Cancer Support Community Montana  
Carbon County Arts Guild & Depot Gallery  
Carbon/Stillwater Community & Senior Programs  
Career Futures  
Career Training Institute  
Career Transitions  
CASA for Kids, Flathead County  
CASA of Hill County  
CASA of Lake & Sanders Counties  
CASA-CAN Children's Advocate Network  
Cascade County Law Clinic  
Catholic Foundation of Eastern Montana  
Center for Large Landscape Conservation  
Center for Restorative Youth Justice  
Central Asia Institute  
Child Care Connections  
Child Care Resources  
Child Development Center  
Children's Alliance of Montana  
Children's Museum Missoula  
Citizens For A Better Flathead  
Clark Fork Valley Hospital Foundation  
Clearwater Resource Council  
Cody Dieruf Benefit Foundation  
Columbus Community Foundation  
Community 7 Television

Community Closet  
 Community Counseling and Correctional Services  
 Community Dispute Resolution Center of Missoula County  
 Community Food & Agriculture Coalition  
 Community Foundation for a Better Bigfork  
 Community Leadership & Development Inc  
 Community Option Resources Enterprises  
 Conrad Mansion Museum  
 Cottonwood ALC  
 Creative Arts Council  
 Custer Network Against Domestic Abuse  
 Daly Hospital Foundation  
 Daly Mansion Preservation Trust  
 Dawson College Foundation  
 Dawson County Domestic Violence Program  
 Dawson County Healthy Communities Coalition  
 Deep Bay Center  
 Developmental Educational Assistance Program  
 Disability Rights Montana  
 District II Alcohol & Drug Program  
 Dog Tag Buddies  
 Dolce Canto  
 Domestic and Sexual Violence Services of Carbon County  
 Dream Adaptive Recreation  
 Eagle Mount Bozeman



Eagle Mount Great Falls  
 Easter Seals-Goodwill Northern Rocky Mountain  
 Eastern Montana CASA-GAL Inc.  
 Eastern Plains Economic Development Corporation  
 Ecology Project International  
 Emerson Center for the Arts and Culture  
 Emma's House  
 Energy Share of Montana  
 Enpower MT  
 ExplorationWorks!  
 Families In Partnership  
 Families with Heart  
 Family Connections  
 Family Promise of Gallatin Valley  
 Family Promise of Great Falls  
 Family Promise of Greater Helena

Family Promise of Yellowstone Valley  
 Family Service  
 Family Support Network  
 Farm Hands Nourish The Flathead  
 First Judicial District CASA-GAL Program  
 Flathead Community Foundation  
 Flathead Food Bank  
 Flathead Lakers  
 Flathead Lutheran Bible Camp  
 Florence Crittenton Home & Services  
 Foundation for Animals  
 Foundation for Community Health  
 Foundation for the Diocese of Helena  
 Foys to Blacktail Trails  
 Free Voice Media  
 Freedom in Christ Prison Ministry  
 Friends of Dornix Park  
 Friends of the Historical Museum at Fort Missoula  
 Friends of the Library  
 Friends of the Missouri River Breaks Monument  
 Friendship Center of Helena  
 Friendship House of Christian Service  
 Front Range CASA/GAL  
 Future West  
 Gallatin County Love in the Name of Christ  
 Gallatin Historical Society  
 Gallatin River Task Force  
 Gallatin Valley Farm to School  
 Gallatin Valley Land Trust  
 Gals Going Global  
 Garden City Ballet  
 Garden City Harvest  
 Girl Scouts of Montana and Wyoming  
 Girls on the Run Flathead Valley  
 Glacier Country Tourism  
 Glacier County Historical Museum  
 Glacier National Park Conservancy  
 Glacier Symphony & Chorale  
 Glacier Two Medicine Alliance  
 Glacier Unitarian Universalist Fellowship  
 Global Village  
 Good Samaritan Ministries Thrift Store  
 Grandstreet Theatre  
 Great Burn Study Group  
 Great Falls Clinic Legacy Foundation  
 Great Falls Senior Citizen's Center  
 Great Falls Symphony Association



Great Northern Development Center  
 Greater Gallatin United Way  
 Greater Montana Foundation  
 Greater Polson Community Foundation  
 Greater Yellowstone Coalition  
 Grizzly & Wolf Discovery Center  
 H.E.A.R.T. Ministries  
 Habitat for Humanity Great Falls Area  
 Habitat for Humanity Mid-Yellowstone Valley  
 Habitat for Humanity of Gallatin Valley  
 Habitat for Humanity of Missoula  
 Habitat for Humanity of Ravalli County  
 Hamilton Players, Inc.  
 Haven  
 Headwaters Foundation  
 Healthy Mothers Healthy Babies, The Montana Coalition  
 Heart of the Rockies Initiative  
 Heart of the Valley Animal Shelter  
 Hearts and Hands Hospice  
 Helena Area Community Foundation  
 Helena Area Habitat for Humanity  
 Helena Civic TV  
 Helena Community Connections  
 Helena Education Foundation  
 Helena Family YMCA  
 Helena Food Share  
 Helena Indian Alliance  
 Helena Symphony Society  
 Helena Tourism Business Improvement District  
 Help Center  
 HELP Committee and Boys and Girls Club of the Hi-line  
 Hi-Line Home Programs  
 Hockaday Museum of Art  
 Holter Museum of Art  
 Home ReSource  
 Homeword, Inc.  
 Human Resource Development Council, District 4  
 Human Resource Development Council, District 7  
 Human Resource Development Council, District 9  
 Human Science Institute  
 Humane Society Lake County Area  
 Humane Society of NW Montana  
 Humanities Montana  
 Imagine IF Library Foundation  
 Indian Law Resource Center  
 Inner Roads  
 Intermountain Children's Home and Services  
 Intermountain Opera Association of Bozeman  
 International Organic Inspectors Association  
 Invasive Species Action Network  
 Jeannette Rankin Peace Center  
 Jefferson Valley Community Foundation  
 Job Connection  
 Kiwanis Foundation of Montana  
 Kootenai Heritage Council  
 L.P. & Teresa Anderson Foundation  
 Lake County CDC  
 Lake County Council on Aging  
 Laurel Montana Community Foundation  
 LaVie: An Early Pregnancy Clinic

Leadership Montana  
 Lewis & Clark Humane Society  
 Lewis and Clark Library Foundation  
 Lewis and Clark Literacy Council  
 Liberty Place  
 Lighthouse Christian Home & Services  
 Lincoln County Transportation Service  
 Literacy Bitterroot  
 Living Art of Montana  
 Livingston Food Resource Center  
 Livingston Healthcare Foundation  
 Maclean Animal Adoption Center  
 Madison River Foundation  
 Madison Valley Medical Center Foundation  
 Mahmowi  
 MAI WAH Society  
 MAPS Media Institute  
 Marion Fire Auxiliary  
 MASS Design Group  
 MCA Education Foundation  
 Miles City Area Community Fund  
 Mission Mountain Enterprises  
 Mission Valley Ice Arena Association  
 Missoula Aging Services  
 Missoula Area Youth Hockey Association  
 Missoula Art Museum  
 Missoula Children's Theatre



Missoula Community Access Television  
 Missoula Community Foundation  
 Missoula Downtown Foundation  
 Missoula Education Foundation  
 Missoula Food Bank  
 Missoula Housing Authority  
 Missoula Interfaith Collaborative  
 Missoula Manor Homes  
 Missoula Ravalli Transportation Management Association  
 Missoula Transportation and Restoration Museum  
 Missoula Writing Collaborative  
 MonDak Heritage Center  
 Montana 4-H Foundation  
 Montana A Cappella Society  
 Montana Association for the Blind  
 Montana Association of Symphony Orchestras  
 Montana Audubon  
 Montana Budget and Policy Center  
 Montana CASA GAL  
 Montana Chamber Foundation



Montana Coalition Against Domestic & Sexual Violence  
 Montana College Access Network  
 Montana Community Development Corporation  
 Montana Conservation Corps



Montana Cooperative Development Center  
 Montana Council of Teachers of Mathematics  
 Montana Council on Developmental Disabilities  
 Montana Creativity Quest - Montana Destination Imagination  
 Montana Credit Unions for Community Development  
 Montana Economic Developers Association  
 Montana Environmental Information Center  
 Montana Farm Bureau Foundation  
 Montana FFA Foundation Incorporated  
 Montana Food Bank Network  
 Montana Healthcare Foundation  
 Montana History Foundation  
 Montana Horse Welfare Council  
 Montana Independent Living Project  
 Montana Innocence Project  
 Montana Justice Foundation  
 Montana Land Reliance  
 Montana Law Enforcement Museum  
 Montana Legal Services Association  
 Montana Library Association  
 Montana Mediation Association  
 Montana Medical Association Foundation  
 Montana Meth Project  
 Montana Natural History Center  
 Montana Operation Lifesave  
 Montana Oral Health Foundation  
 Montana Police Protective Association Foundation  
 Montana Post Secondary Educational Opportunities Council  
 Montana PTA  
 Montana Public Health Association  
 Montana Raptor Conservation Center  
 Montana Renewable Energy Association  
 Montana Restoration Foundation  
 Montana Science Center  
 Montana Section of the American Water Works Association  
 Montana Shares  
 Montana State University - Billings Foundation  
 Montana State University - Northern Foundation  
 Montana Supporting Military  
 Montana Tech Foundation  
 Montana Warriors on the Water  
 Montana Weed Control Association

Montana Wilderness Association  
 Montana Wildlife Federation  
 Montana's Peer Network  
 Montanical Garden  
 Moonlight Community Foundation  
 Morning Star Expeditions  
 Mountain Home Montana  
 Mountain Journal  
 Musselshell Valley Community Foundation  
 Myrna Loy Center for Performing and Media Arts



Nate Chute Foundation  
 National Center for Appropriate Technology  
 National Indigenous Women's Resource Center  
 Native American Community Development Corporation  
 Neighbor To Neighbor  
 Neighborworks Great Falls  
 NeighborWorks Montana  
 Nibs and Edna Allen Foundation  
 Ninepipes Museum of Early Montana  
 North American Indian Alliance  
 North Central Area Agency on Aging  
 North Central Independent Living Services  
 North Lake County Library Foundation  
 North Valley Food Bank  
 North Valley Hospital Foundation  
 Northeast Montana Health Services Charitable Foundation  
 Northern Plains Resource Council  
 Northwest Montana Head Start  
 Northwest Montana United Way  
 NOVA Center for the Performing Arts  
 Nurturing Center  
 Old Montana Prison and Auto Museums  
 Old Trail Museum  
 Oneness Project  
 Open Aid Alliance  
 Opportunities, Inc.  
 Opportunity Link, Inc.  
 Opportunity Resources  
 Organic Advisory and Education Council  
 Orphan Girl Children's Theatre  
 Parents Let's Unite for Kids  
 Paris Gibson Square  
 Park County Community Foundation  
 Park County Environmental Council  
 Park County Friends of the Arts  
 Park County Senior Citizens Center

Peers Unlimited  
 PFLAG Lewis & Clark County Chapter  
 Plentywood Educational Alumni Foundation  
 Pompeys Pillar Historical Association  
 Pondera Arts Council  
 Poverello Center  
 Power for Abundant Recovery Ministries  
 Presbyterian Church USA dba Peace Place  
 Prickly Pear Land Trust  
 Pride Foundation  
 Project Ascent  
 Project Hope  
 Providence Montana Health Foundation  
 Pull Together Now  
 Ranchers Stewardship Alliance  
 Ravalli County Council on Aging  
 Ravalli County Museum and Historical Society  
 Reach Higher Montana  
 Reach Out & Care Wheels  
 Reach, Inc.  
 Recycle Montana  
 Red Ants Pants Foundation  
 Red Lodge Area Community Foundation  
 Red Lodge Fire EMS Foundation  
 Red Willow Learning Center  
 Region IV Family Outreach  
 Relational Wisdom 360  
 Resource, Support and Development.  
 Richland Opportunities  
 Rimrock  
 RiverStone Health Foundation  
 Riverstone School  
 Roberts Community Foundation  
 Rocky Mountain College  
 Rocky Mountain Development Council  
 Rocky Mountain Elk Foundation  
 Rocky Mountain Front Weed Roundtable  
 Ruby Habitat Foundation  
 Ruby Valley Healthcare Foundation  
 Run Wild Missoula  
 Rural Dynamics  
 Rural Employment Opportunities



SAFE Harbor  
 Sagebrush Food Pantry  
 Salish Kootenai College Foundation  
 Samaritan House  
 Sanders County Coalition For Families

Seeley Lake Community Foundation  
 Seeley Lake Regional Center for Kinetic Sports  
 Selway-Bitterroot Frank Church Foundation  
 Shane Lalani Center for the Arts  
 Shepherds Hand  
 Sheridan Health Care Foundation  
 Silver Bow Art  
 Smelter City Family Development  
 Soft Landing Missoula  
 Soil and Water Conservation Districts of MT  
 South Central Montana Regional Mental Health Center  
 Southeast Montana Area Revitalization Team  
 Southwest Montana School Services  
 Southwestern Montana Family YMCA  
 Special K Ranch  
 Special Olympics Montana  
 Spirit of Life Community Bike Shop  
 St Catherine Family Health Care Clinic & PRC  
 St. John's Lutheran Ministries  
 St. Labre Indian School Educational Association  
 St. Peter's Health Foundation  
 Stevensville Main Street Association  
 Sula Country Life Community Clubhouse  
 Summit Independent Living Center  
 Sun River Watershed  
 Sunburst Unlimited  
 Sunnyside Farms  
 Sunrise Women's Clinic  
 Supporters of Abuse Free Environments  
 Swan Valley Connections



Sweet Grass Community Foundation  
 Sweet Pea a Festival of the Arts  
 Sweetgrass Development  
 Tamarack Grief Resource Center  
 Teller Wildlife Refuge  
 The Art Center  
 The Caring Foundation of Montana  
 The Clay Studio of Missoula  
 The Confluence Center  
 The Montana Racial Equity Project  
 The Nature Conservancy  
 The O'Hara Commons & Sustainability Center  
 The Rosebud Foundation  
 The Traveling School  
 Thermus Aquaticus Learning & Swim Center  
 Thrive  
 Toby's House Crisis Nursery  
 Travelers' Rest Preservation & Heritage Association

Treacy Foundation  
 Treesource Inc  
 Tri-County Firesafe Working Group  
 Tumbleweed Runaway Program  
 Turning the Wheel Missoula  
 United Way of Beaverhead  
 United Way of Cascade County  
 United Way of Hill County  
 United Way of Missoula County  
 United Way of the Lewis & Clark Area  
 Upper Swan Valley Historical Society  
 Valley County Community Foundation  
 Veterinary Initiative for Endangered Wildlife  
 Victim-Witness Assistance Services  
 Violence Free Crisis Line  
 Vital Ground Foundation  
 Volunteers of America Northern Rockies  
 Warriors and Quiet Waters  
 Watershed Education Network



WaterWorks Art Museum  
 Watson Children's Shelter  
 West Mont  
 West Yellowstone Foundation  
 Western Heritage Center  
 Western Montana Area VI Agency on Aging  
 Western Montana Chapter for the Prevention of Elder Abuse  
 Western Montana Equine Rescue & Rehabilitation  
 Western Native Voice



Western Sustainability Exchange  
 Whitefish Community Foundation  
 Whitefish Lake Institute  
 Whitefish Legacy Partners  
 Whitetail Ranch Center  
 Wild Rockies Field Institute

Wilderness Watch  
 Windhorse Equine Learning  
 Women In Action  
 Women's Opportunity Resource Center  
 Women's Resource Community Support Center  
 Women's Voices For The Earth  
 World Montana  
 Writing Coaches of Montana  
 Yellowstone Art Museum  
 Yellowstone Bighorn Research Association  
 Yellowstone Boys and Girls Ranch Foundation  
 Yellowstone CASA  
 Yellowstone Club Community Foundation  
 Yellowstone Ecological Research Center  
 Yellowstone Forever  
 Yellowstone Historic Center  
 Yellowstone Valley Animal Shelter  
 Yellowstone Wildlife Sanctuary  
 Yes Youth Empowerment Services  
 Youth Connections  
 Youth Homes  
 YWCA Billings  
 YWCA Helena  
 YWCA Missoula  
 YWCA of Great Falls  
 ZooMontana  
 Zootown Arts Community Center

# AFFILIATE MEMBERS

Allegra Marketing, Print, Mail  
Arthur M. Blank Family Foundation  
Associated Employers  
Avitus Group  
Beartooth Business Consulting  
Big Sky Chamber of Commerce  
Big Sky Philanthropic Advisors  
Bullhook Community Health Center  
Chany Reon Ockert Consulting, LLC  
Cinnabar Foundation  
Crowley Fleck PLLP  
DIY Nonprofit PR  
Doty and Doty-Terry Household  
Downtown Bozeman Partnership  
Dvarishkis Household  
Eck Household  
Edge Marketing + Design  
Element L Design  
Emily Flemming  
Entre Technology Services  
First Call Computer Solutions  
Flaherty Consulting  
Frontline Processing Corporation  
Gianforte Family Foundation  
Glacier County Regional Port Authority  
Glendive Chamber of Commerce  
GrantHub, a division of Foundant Technologies  
GrantsMagic U  
Hamilton Downtown Association  
Harbor Compliance  
Helena BID  
Hello Soul  
Hillary Selvin  
Humble Twig LLC  
Interstate Merchant Services  
Junkermier, Clark, Campanella, Stevens PC  
Knutson Household  
Lawrence D. Johnson; Attorney at Law  
Leadership Outfitters  
Marca R Gibson, CPA/CMA  
Meetings Northwest  
Missoula County Weed District & Extension  
Montana Arts Council  
Montana Association of Counties MACO  
Montana Bankers Association  
Montana Children's Trust Fund  
Montana Community Foundation  
Montana High Tech Business Alliance  
Montana Historical Society  
Montana Nursery & Landscape Association

Mountain-Pacific Quality Health  
MSU Bozeman Office of Student Engagement  
MSU Local Government Center  
My Way 2 Help  
Ned Cooney, Facilitator & Consultant  
Nonprofit Impact  
Nonprofit Legal Services LLC  
Now IT Matters  
Park Side Credit Union  
Paychex  
PHIL  
Randall and Company PC  
Richland County Health Department  
Rodda Consulting  
Rogala Household  
Rural Economic Designs, LLC  
S. G. Long and Company  
Sage Solutions Nonprofit Consulting, LLC  
State-41 Media Solutions, LLC  
Still Waters LLC  
Strategies 360  
Talbot Household  
TessellLearn  
The Dotted i  
Third Sector Consulting Group, LLC  
Trister, Ross, Schadler & Gold, PLLC  
UM Office for Civic Engagement  
University of Montana Campus Compact  
Verve Exchange Consulting  
Wipfli LLP

# SUSTAINING MEMBERS

Alan and Nancy Nicholson  
Bloomerang  
Eastern Montana Industries  
Firespring  
First Interstate Bancsystem Foundation  
Leavitt Group  
M+R Strategic Services  
MNA Group Benefit Trust  
Liz Moore  
NorthWestern Energy  
O.P. & W.E. Edwards Foundation  
PayneWest Insurance  
SCL Health Montana



# CONTRIBUTORS

Aidan Myhre  
Alison Paul  
Amy Drain  
Andrea Vernon  
Barbara Knutson  
Dee Incoronato  
Bill and Lorraine Pankratz  
Bruce Day  
C. B. Pearson  
Dale Woolhiser  
Dawn Wrigg  
Doug Habermann  
E. Edwin and Joyce Eck  
Emily Flemming  
James and Linda Soft  
James Bennett  
Jason Rittal  
John & Jasyn Harrington  
Jono McKinney  
Julie Rodda  
Keri McWilliams  
Lanie Plovovich  
Larry Johnson  
Lawrence D. and Marg Johnson  
Leandra Lipson  
Leslie Modrow  
Liz Moore  
Mary Rutherford  
Mike Casey  
Mike Stark  
Peggy Owens  
Russ Cargo  
Sandra Anderson  
Scott Pankratz  
Shawn Peterson  
Sherman Weimer  
Sue Talbot  
Susan Denson-Guy  
Tim Peterson  
Whitney Cantlon  
Billings Community Foundation  
Dennis and Phyllis Washington Foundation  
O.P. & W.E. Edwards Foundation  
First Interstate Bancsystem Foundation  
Flathead Community Foundation  
Headwater's Foundation  
M. J. Murdock Charitable Trust  
MDU Resources Foundation  
Montana Children's Trust Fund  
Montana Community Foundation  
Montana Healthcare Foundation  
Montana Nonprofit Association Group Benefits Trust  
Mountain Sky Guest Ranch Fund  
Oro Y Plata Foundation  
Salesforce.com Foundation  
St. Peter's Health Foundation  
Steele Reese Foundation  
Town Pump Charitable Foundation  
Treacy Foundation  
University of Montana  
Yellowstone Boys and Girls Ranch Foundation

# SPONSORS

Allegra Marketing, Print & Mail  
Anderson ZurMuehlen & Co. P.C.  
Associated Employers  
Avitas Group  
Beartooth Business Consulting  
Blue Cross Blue Shield of Montana  
BNSF Railway  
Bloomerang  
Compass-360 Association  
DA Davidson  
Eastern Montana Industries  
EBMS  
Edge Marketing + Design  
ELAP Services  
Emerson Center for the Arts and Culture  
First Call Computer Solutions  
First Nonprofit Companies  
Frontline Processing Corporation  
GrantHub, Division of Foundant Technologies  
Junkermier, Clark, Campanella, Stevens PC  
Leavitt Great West  
M+R Strategic Services  
MoFi  
Monitor Liability Managers  
Montana Chapter - Association of Fundraising Professionals  
Montana Correctional Enterprises  
Morrison-Maierle Systems  
Northwestern Energy  
Payne West Insurance  
Pureview Health Center  
Rodda Consulting  
Sage Solutions Nonprofit Consulting  
SCL Health Montana  
SG Long and Company  
Stockman Bank  
Systems Technology Consultants  
Town Pump Hotels  
University of Montana Office for Civic Engagement  
Valley Bank Helena  
Wells Fargo  
Wipfli LLP Helena