



Montana Nonprofit Association


---

# Go further together.

**2017** ANNUAL REPORT



Montana Nonprofit Association



MNA was built  
on the belief  
that we would  
be stronger  
together than  
apart – and that  
has proved true.

## DEAR FRIENDS,

2017 was a year of regrouping, forward momentum, and looking toward the future. We traversed Montana multiple times to meet, network, educate, convene, listen, and advocate.

We started the year with the 2017 Legislative Session, which was followed by a Special Session to address revenue shortfalls. Both sessions included budget cuts which were challenging for our members. In response, the MNA Public Policy Council added a new topic to our public policy agenda, advocating for “a budget structure, including both revenue and appropriations, that meets the needs of today’s Montana.”

In April we celebrated the new edition of MNA’s Principles and Practices for Nonprofit Excellence in Montana with a full-on road show. We saw almost 150 of our members in ten communities ranging from Kalispell to Glendive to Livingston. Other highlights include our four-part Nonprofit Management Series in Butte, Hamilton and Livingston, our first ever Nonprofit Financial Leadership Conference, and our most highly attended Conference to date with 461 registrants. In total, almost 1400 individuals participated in one of 33 community-based events.

Membership held steady with a retention rate of 82%. We ended 2017 with 543 nonprofit organization members and

77 affiliate members—consultants, businesses, government partners, and generous friends—who are an important part of our association. 36% of our members operated in rural communities and we welcomed 86 new members.

MNA’s total revenue in 2017 equaled \$711,728 compared to the 2016 total of \$529,901. Total increase in net assets was \$59,865.

As we look back on 2017, we are grateful for the remarkable opportunity to serve our members and the larger nonprofit community in Montana. And, as we usher in 2018—our sixteenth anniversary—we recall MNA was built on the belief that we would be stronger together than apart—and that has proved true. Thank you for the opportunity to lead when leadership is needed, to give voice when it’s called for, and to be both your resource and partner in this demanding, meaningful, and optimistic work we share.



**Liz Moore**  
*Executive Director*



**Mary Peterson**  
*Board Chair*



## STAFF

**Tina Bateman-Schlepp**  
*Communications Manager*

**Jeri Bucy**  
*Membership Director*

**Emily Flemming**  
*Director of Operations*

**Barbara Knutson**  
*Program and  
Executive Assistant*

**Liz Moore**  
*Executive Director*

## BOARD OF DIRECTORS

**Mary Peterson, Chair**  
*Executive Director*  
Eagle Mount Bozeman  
Bozeman, MT

**C.B. Pearson, Vice Chair**  
*Senior Vice President*  
M+R Strategic Services  
Missoula, MT

**Susan Denson Guy, Secretary**  
*Executive Director*  
Emerson Center for the  
Arts and Culture  
Bozeman, MT

**Sherman Weimer, Treasurer**  
*Executive Director*  
Eastern Montana Industries  
Miles City, MT

**Scott Pankratz**  
*Executive Director*  
Ecology Project International  
Missoula, MT

**Larry Johnson**  
*Attorney at Law*  
Hamilton, MT

**Dee Inoronato**  
*Director of Strategy*  
Intermountain  
Bigfork, MT

**Matt Lundgren**  
*Executive Director*  
Friendship House  
of Christian Service  
Billings, MT

**Leslie Modrow**  
*Development Director*  
Billings Public Library  
Foundation  
Billings, MT

**Brenda Peterson**  
*President and CEO*  
The Wendt Agency  
Great Falls, MT

**DeeAnn Richardson**  
*Executive Director*  
SAFE Harbor  
Ronan, MT

**Jason Rittal**  
*Fallon County  
Development Advisor*  
Baker, MT

**Rob Tallon**  
*Reach, Inc.*  
Bozeman, MT

**Andrea Vernon**  
*Executive Director  
of Montana Campus  
Compact and Director  
of Civic Engagement*  
University of Montana  
Missoula, MT

**Bob Wilmouth**  
*President*  
Rocky Mountain College  
Billings, MT

**Dawn Wrigg**  
*Manager*  
Rudd & Company, PLLC  
Helena, MT

A person is hiking on a dirt trail on a grassy mountain slope. In the background, there are snow-capped mountain peaks under a blue sky with scattered white clouds. The entire image has a blue color overlay.

“

Fantastic...my  
organization  
is better  
because of  
the work  
you do!  
Thank you!



You always do a tremendous job in making us feel that we are all part of an essential and connected community.

The **Nonprofit Rockstar Tour** stopped in ten communities to distribute the revised edition of MNA's Principles and Practices for Nonprofit Excellence in Montana, a publication which includes legal compliance requirements, industry standards, and aspirational goals for nonprofit organizational development.

MNA's first ever **Nonprofit Financial Leadership Conference** was attended by 70 professionals.



**1377**

people from across Montana participated in one or more of MNA's

**33**

community events.

**58%**

of participants were from one of Montana's urban centers and

**42%**

were rural.



461 individuals attended the **2017 Annual Conference**, making it the highest attended ever.

The **Nonprofit Management Series** was held in Livingston, Butte, and Hamilton, with 163 individuals learning about Board Governance, Financial Management, Strategic Planning, and Fund Development.

# MEMBERSHIP

Members are the heart of MNA and integral to Montana's dynamic nonprofit sector. Together, we are many missions, one voice.

620

## MEMBERS SERVED IN 2017

36%

**RURAL**  
MEMBERS

82%

**RETENTION**  
RATE

86

**NEW**  
MEMBERS

77

**AFFILIATE**  
MEMBERS

543

**NONPROFIT**  
MEMBERS






# OUR PRODUCTS & SERVICES



**In 2017, MNA members saved more than \$1 million on administrative costs through group buying power.** MNA negotiates and secures affordable products and services so that MNA members are able to direct more resources toward mission related work. MNA's group buying programs include health insurance, nonprofit management liability insurance, an active career center and job board, grantseeking subscriptions, volunteer and staff background check services, and more.

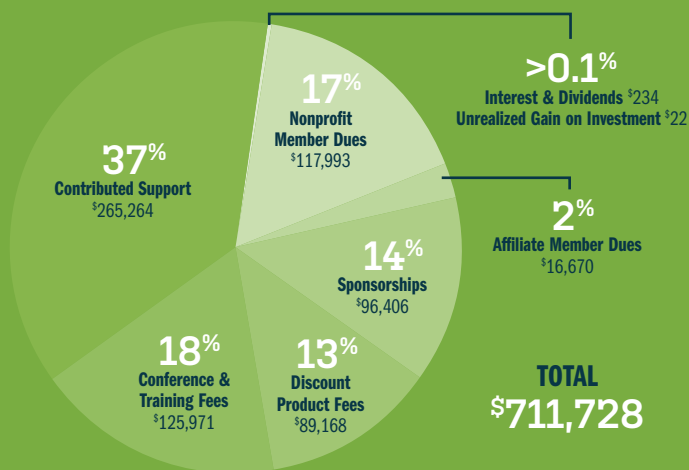
MNA members' top money-saving products are unemployment insurance with **First Nonprofit Group**, a dynamic career center for employers and employees alike called **Your Membership Job Board**, health insurance through the **MNA Group Benefits Trust**, and the topnotch fundraising database, **GrantStation**.





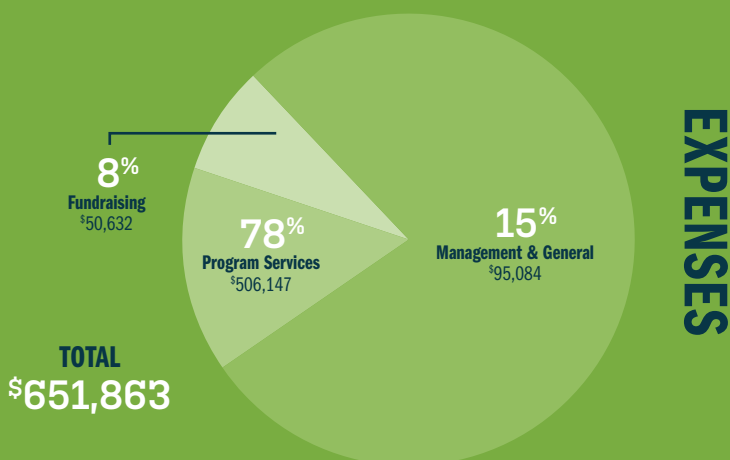
MNA's total revenue in 2017 equaled \$711,728 compared to the 2016 total of \$529,901. Total increase in net assets was \$59,865.

# REVENUE & SUPPORT



78% of MNA's expenditures were used for **program services** such as nonprofit advocacy, bolstering nonprofit management and leadership capacity, producing research and information about the nonprofit sector, and providing nonprofits across the state with an array of cost saving products and services. 15% of expenditures were used for **administration** and 8% for **fundraising**.

MNA's **increase in unrestricted net assets** by the end of 2017 was **\$1,713**.



## STATEMENTS OF FINANCIAL POSITION

DECEMBER 31, 2017 AND 2016

ASSETS	2017	2016
<b>CURRENT ASSETS</b>		
Cash and cash equivalents	\$ 31,774	\$ 32,035
Grants receivable, current	85,500	40,000
Accounts receivable	27,421	19,305
Prepaid expenses	368	2,778
<b>Total current assets</b>	<b>145,063</b>	<b>94,118</b>
<b>FIXED ASSETS</b>		
Property and equipment	84,840	77,038
Less accumulated depreciation and amortization	(61,327)	(52,875)
<b>Total fixed assets</b>	<b>23,513</b>	<b>24,163</b>
<b>OTHER ASSETS</b>		
Investments	-	690
Refundable unemployment reserve	6,030	5,030
Grants receivable, long term	29,609	14,140
<b>Total other assets</b>	<b>35,639</b>	<b>19,860</b>
<b>TOTAL ASSETS</b>	<b>\$204,215</b>	<b>\$138,141</b>
LIABILITIES & NET ASSETS	2017	2016
<b>CURRENT LIABILITIES</b>		
Accounts payable	\$ 261	\$ 5,380
Accrued payroll liabilities	36,781	25,770
Deferred revenue	48,660	48,343
<b>Total current liabilities</b>	<b>85,702</b>	<b>79,493</b>
<b>NET ASSETS</b>		
Unrestricted	1,713	677
Temporarily restricted	116,800	57,971
<b>Total net assets</b>	<b>118,513</b>	<b>58,648</b>
<b>TOTAL LIABILITIES AND NET ASSETS</b>	<b>\$204,215</b>	<b>\$138,141</b>

# STATEMENTS OF ACTIVITIES

FOR THE YEARS ENDED DECEMBER 31, 2017 AND 2016

	2017			2016
	Unrestricted	Temporarily Restricted	Total	Total
<b>REVENUE &amp; SUPPORT</b>				
Nonprofit member dues	\$ 117,993	\$ -	\$117,993	\$110,084
Affiliate member dues	16,670	-	16,670	9,100
Sponsorships	96,406	-	96,406	135,583
Discount product fees	89,168	-	89,168	86,718
Conference and training fees	125,971	-	125,971	116,071
Contributed support	47,235	218,029	265,264	72,117
Interest and dividends	234	-	234	18
Unrealized gain on investments	22	-	22	210
Released from restrictions	159,200	(159,200)	-	-
<b>Total revenue and support</b>	<b>652,899</b>	<b>58,829</b>	<b>711,728</b>	<b>529,901</b>
<b>EXPENSES</b>				
Program services	506,147	-	506,147	462,214
Management and general	95,084	-	95,084	101,521
Fundraising	50,632	-	50,632	29,443
<b>Total expenses</b>	<b>651,863</b>	<b>-</b>	<b>651,863</b>	<b>593,178</b>
<b>CHANGE IN NET ASSETS</b>	1,036	58,829	59,865	(63,277)
Net assets at beginning of year	677	57,971	58,648	121,925
<b>NET ASSETS AT END OF YEAR</b>	<b>\$ 1,713</b>	<b>\$116,800</b>	<b>\$118,513</b>	<b>\$58,648</b>

## MANY MISSIONS, ONE VOICE

Montana Nonprofit Association's mission is to provide leadership for Montana's nonprofit sector and partner with charitable nonprofits to promote a sustainable, networked, and influential sector.

# NONPROFIT MEMBERS

100 Fold Studio  
 A Carousel for Missoula Foundation Inc.  
 ACLU of Montana Foundation  
 Adult Resource Alliance of Yellowstone County  
 Adventure Cycling Association  
 AERO - Alternative Energy Resources Organization  
 Alberta Bair Theater  
 Alliance for Youth, Inc.  
 Alpine Artisans, Inc.  
 Alternatives, Inc.  
 American Indian Institute  
 Anaconda Community Foundation  
 Angel Horses  
 Archie Bray Foundation  
 Area II Agency on Aging  
 Arts Council of Big Sky  
 Arts Missoula  
 Arts Without Boundaries Foundation  
 ASPEN - Abuse Support & Prevention Education Network  
 Aspen's Angels Grief Outreach Foundation  
 Back Country Horsemen of the Flathead  
 Bear Paw Development Corporation  
 Beartooth Front Community Forum  
 Beartooth Humane Alliance  
 Beartooth Mountain Christian Ministries  
 Beartooth Recreational Trails Association, Inc.  
 Beaverhead Trails Coalition  
 Befrienders, Inc.  
 Benefis Health System Foundation  
 Benefis Teton Medical Center Foundation  
 Big Brothers Big Sisters of Butte-Silver Bow  
 Big Hole River Foundation, Inc.  
 Big Hole Watershed Committee  
 Big Horn Hospital Association  
 Big Sandy Activities  
 Big Sky Community Organization  
 Big Sky Discovery Academy  
 Big Sky Film Institute  
 Big Sky Institute for the Advancement of Nonprofits  
 Big Sky Science Education Enhancement  
 Big Sky Senior Services, Inc.  
 Big Sky Youth Empowerment Project

Bigger Sky Kids  
 Bike Walk Montana  
 Billings Amateur Hockey League  
 Billings Child Care Association  
 Billings Christian School Education Foundation  
 Billings Community Foundation  
 Billings Public Library Foundation  
 Billings Symphony Society  
 Billings TrailNet (Bikenet)  
 Biomimicry Institute  
 Bitter Root Resource Conservation & Development Area  
 Bitter Root Water Forum  
 Bitterroot CASA, Inc.  
 Bitterroot Performing Arts Council  
 Bitterroot Trail Preservation Alliance  
 Blackfoot Challenge  
 Blue Mountain Clinic, Inc.  
 Boyd Andrew Community Services  
 Boys and Girls Club of Lewistown  
 Boys and Girls Club of Richland County



Boys and Girls Club of the Northern Cheyenne Nation  
 Boys and Girls Clubs of Yellowstone County  
 Bozeman Area Community Foundation  
 Bozeman Art Museum  
 Bozeman Health Foundation  
 Bozeman Public Library Foundation Inc

Bozeman Senior Center, Inc.  
 Brain Injury Alliance of Montana  
 Bridger Ski Foundation  
 Bridgercare  
 Brightways Learning  
 Broadwater Community Health Foundation, Inc.  
 Broadwater Educational Foundation  
 Burton K. Wheeler Center  
 Butte 4-C's  
 Butte America Foundation  
 Butte Emergency Food Bank  
 C.M. Russell Museum  
 Camp Mak-A-Dream  
 Cancer Support Community Montana  
 Carbon County Arts Guild & Depot Gallery  
 Carbon/Stillwater Community & Senior Programs  
 Career Futures, Inc.  
 Career Training Institute  
 Career Transitions  
 CASA for Kids, Inc. Flathead County  
 CASA of Hill County, Inc.  
 CASA-CAN Children's Advocate Network  
 Cascade County Law Clinic  
 Catholic Foundation of Eastern Montana  
 Center for Large Landscape Conservation  
 Central Asia Institute  
 Central Montana Youth Mentoring Program, Inc.  
 Cheerful Heart, Inc.  
 Child Care Resources  
 Child Development Center  
 Children's Alliance of Montana  
 Children's Museum Missoula  
 Citizens For A Better Flathead  
 Clark Fork School, Inc.  
 Clark Fork Valley Hospital Foundation  
 Cody Dieruf Benefit Foundation  
 Community 7 Television  
 Community Action Partnership of Northwest Montana  
 Community Counseling and Correctional Services, Inc.  
 Community Food & Agriculture Coalition  
 Community Foundation for a Better Bigfork  
 Community Leadership & Development Inc.  
 Community Option Resources Enterprises, Inc.  
 Conrad Mansion Museum  
 Cottonwood Commons Transition Home  
 Cottonwood Day School  
 Creative Arts Council  
 Cultivate Helena  
 Custer Network Against Domestic Abuse

Daly Hospital Foundation  
 Daniels Memorial Hospital Foundation  
 Dawson College Foundation  
 Dawson County Domestic Violence Program  
 Dawson County Healthy Communities Coalition  
 Dayton Proctor Park Association  
 Deep Bay Center  
 Developmental Educational Assistance Program  
 Disability Rights Montana  
 District II Alcohol & Drug Program  
 Dog Tag Buddies



Dolce Canto, Inc.  
 Domestic and Sexual Violence Services of Carbon County  
 Dream Adaptive Recreation, Inc.  
 Eagle Mount Bozeman  
 Eagle Mount Great Falls  
 Easter Seals-Goodwill Northern Rocky Mountain, Inc.  
 Eastern Montana CASA-GAL Inc.  
 Ecology Project International  
 Eleanor's Project  
 Emerson Center for the Arts and Culture  
 Emma's House  
 Energy Share of Montana  
 Empower MT  
 ExplorationWorks!  
 Family Connections  
 Family Promise of Gallatin Valley, Inc.  
 Family Promise of Greater Helena  
 Family Promise of Yellowstone Valley  
 Family Service, Inc.  
 Family Tree Center  
 Farm Hands-Nourish The Flathead  
 Fifth Judicial District Voice for Children  
 First Judicial District CASA-GAL Program, Inc.  
 Flathead Community Foundation  
 Flathead Food Bank, Inc.  
 Flathead Lakers

## NONPROFIT MEMBERS (CONT)

Flathead Lutheran Bible Camp  
 Florence Crittenton Home & Services  
 Forward MT Foundation  
 Foundation for Animals  
 Foundation for Community Care  
 Foundation for Community Health  
 Foundation for Community Vitality  
 Foundation for the Diocese of Helena  
 Free Voice Media  
 Friends of Dornix Park  
 Friends of the Bozeman Public Library  
 Friends of the Darby Library  
 Friends of the Library (Livingston)  
 Friends of the Missouri River Breaks Monument  
 Friends of the Stillwater County Library  
 Friendship Center of Helena, Inc  
 Friendship House of Christian Service  
 Front Range CASA/GAL  
 Future West, Inc.  
 Gallatin County Love in the Name of Christ  
 Gallatin Historical Society  
 Gallatin River Task Force  
 Gallatin Valley Farm to School  
 Gallatin Valley Land Trust  
 Garden City Ballet  
 Garden City Harvest  
 Girl Scouts of Montana and Wyoming  
 Glacier County Historical Museum  
 Glacier National Park Conservancy  
 Glacier Symphony & Chorale  
 Glacier Unitarian Universalist Fellowship  
 Glacier-Two Medicine Alliance  
 Glen-Wood, Inc.  
 Glendive Medical Center Foundation  
 Global Village, Inc.  
 Good Samaritan Ministries Thrift Store  
 Grandstreet Theatre  
 Great Beginnings Montessori School  
 Great Burn Study Group  
 Great Falls Development Authority, Inc.  
 Great Falls Senior Citizen's Center

Great Falls Symphony Association  
 Great Northern Development Center  
 Greater Gallatin United Way  
 Greater Montana Foundation  
 Greater Polson Community Foundation  
 Greater Yellowstone Coalition  
 Grizzly & Wolf Discovery Center  
 H.E.A.R.T. Ministries  
 Habitat for Humanity Great Falls Area  
 Habitat for Humanity Mid-Yellowstone Valley  
 Habitat for Humanity of Gallatin Valley  
 Habitat for Humanity of Missoula  
 Habitat for Humanity of Ravalli County  
 Hamilton Players, Inc.  
 Haven  
 Headwaters Foundation  
 Healthy Mothers Healthy Babies, The Montana Coalition, Inc.  
 Heart of the Valley Animal Shelter  
 Helena Area Community Foundation  
 Helena Civic TV  
 Helena Education Foundation



Helena Family YMCA  
 Helena Food Share  
 Helena Indian Alliance  
 Helena Symphony Society  
 Helena Tourism Business Improvement District  
 Help Center, Inc.  
 HELP Committee and Boys and Girls Club of the Hi-line  
 Heroes and Horses  
 Hi-Line Home Programs, Inc.



Hockaday Museum of Art  
 Holter Museum of Art  
 Holy Rosary Healthcare Foundation  
 Home ReSource  
 Homeword, Inc.  
 Hope Springs Ranch Inc.  
 Human Resource Development Council (HRDC), District 4  
 Human Resource Development Council (HRDC), District 7  
 Human Resource Development Council (HRDC), District 9  
 Human Science Institute, Inc.  
 Humane Society Lake County Area Inc.  
 Humane Society of NW Montana  
 Humane Society of Western Montana  
 Humanities Montana  
 Imagine IF Library Foundation  
 Indian Law Resource Center  
 Intermountain Children's Home and Services  
 Intermountain Opera Association of Bozeman  
 International Choral Festival of Missoula  
 International Organic Inspectors Association  
 Invasive Species Action Network  
 Jeannette Rankin Peace Center  
 Jefferson Valley Community Foundation  
 Job Connection, Inc.  
 K9 Care Montana Inc.  
 Kay McKenna Youth Foundation  
 Kootenai Heritage Council, Inc.  
 L.P. & Teresa Anderson Foundation  
 Lake County CDC  
 LaVie: An Early Pregnancy Clinic  
 Learn Inc  
 Lewis & Clark Humane Society  
 Lewis and Clark Library Foundation  
 Lewis and Clark Literacy Council  
 Lewis and Clark Trail Heritage Foundation  
 Liberty Place, Inc.  
 Life Houses, Inc.  
 Life Skills FORE Montana Youth, Inc.  
 LIFTT, Inc.  
 Lighthouse Christian Home & Services, Inc.  
 Lincoln County Transportation Service, Inc.  
 Literacy Bitterroot  
 Living Art of Montana  
 Livingston Food Resource Center  
 Livingston Healthcare Foundation  
 Livingston Youth Soccer Association  
 Lolo Watershed Group  
 Maclean Animal Adoption Center  
 Madison River Foundation, Inc.

Madison Valley Medical Center Foundation  
 MAI WAH Society  
 MAPS Media Institute  
 MAPS Media Institute  
 Marion Fire Auxiliary Inc.  
 McLaughlin Research Institute for Biomedical Sciences  
 Merlin Counseling, Consulting, & Community  
 Miles City Area Community Fund  
 Miles City Community College Endowment  
 Million Girl Army  
 Mission Mountain Enterprises, Inc.  
 Mission Valley Ice Arena Association  
 Missoula Aging Services  
 Missoula Area Youth Hockey Association  
 Missoula Art Museum  
 Missoula Children's Theatre  
 Missoula Community Access Television Inc.  
 Missoula Community Foundation  
 Missoula Downtown Foundation  
 Missoula Education Foundation  
 Missoula Food Bank  
 Missoula Housing Authority  
 Missoula Interfaith Collaborative  
 Missoula Manor Homes  
 Missoula Ravalli Transportation Management Association, Inc.  
 Missoula Transportation and Restoration Museum  
 Missoula Writing Collaborative  
 MoFi (Montana Community Development Corporation)  
 MonDak Heritage Center  
 Montana 4-H Foundation



Montana A Cappella Society  
 Montana Amateur Sports, Inc. dba Big Sky State Games  
 Montana Audubon  
 Montana Budget and Policy Center

## NONPROFIT MEMBERS (CONT)

Montana CASA GAL  
 Montana Coalition Against Domestic & Sexual Violence  
 Montana College Access Network  
 Montana Conservation Corps  
 Montana Cooperative Development Center  
 Montana Council of Teachers of Mathematics  
 Montana Creativity Quest - Montana Destination  
     Imagination  
 Montana Credit Unions for Community Development  
 Montana Discovery Foundation  
 Montana Economic Developers Association  
 Montana Environmental Information Center  
 Montana Farm Bureau Foundation  
 Montana FFA Foundation Incorporated  
 Montana Food Bank Network  
 Montana Generational Justice Foundation  
 Montana Healthcare Foundation  
 Montana History Foundation  
 Montana Independent Living Project  
 Montana Innocence Project  
 Montana Justice Foundation  
 Montana Land Reliance  
 Montana Law Enforcement Museum  
 Montana Legal Services Association  
 Montana Library Association, Inc.  
 Montana Mediation Association  
 Montana Meth Project  
 Montana Natural History Center  
 Montana Operation Lifesaver, Inc.  
 Montana Oral Health Foundation  
 Montana Police Protective Association Foundation  
 Montana PTA  
 Montana Public Health Association  
 Montana Renewable Energy Association  
 Montana Restoration Foundation  
 Montana Science Center  
 Montana Section of the American Water  
     Works Association  
 Montana Shares  
 Montana State Parks Foundation  
 Montana State University - Billings Foundation

Montana State University- Northern  
 Montana State University- Northern Foundation  
 Montana Supporting Military  
 Montana Tech Foundation  
 Montana Vets-Montana Waters Inc.  
 Montana Watershed Coordination Council  
 Montana Weed Control Association  
 Montana Wilderness Association  
 Montana Wildlife Federation  
 Montana's Outdoor Legacy Foundation  
 Montana's Peer Network  
 Montanical Garden  
 Moonlight Community Foundation  
 Musselshell Valley Community Foundation  
 Myrna Loy Center for Performing and Media Arts  
 Nate Chute Foundation  
 National Alliance on Mental Illness of Montana  
 National Center for Appropriate Technology - N.C.A.T.  
 National Indigenous Women's Resource Center, Inc.  
 Native American Community Development Corporation



Neighbor To Neighbor  
 NeighborWorks Montana  
 Ninepipes Museum of Early Montana  
 North American Indian Alliance  
 North Central Area Agency on Aging  
 North Central Independent Living Services  
 North Lake County Library Foundation  
 North Valley Food Bank  
 North Valley Hospital Foundation  
 Northeast Montana Health Services Charitable  
     Foundation  
 Northern Plains Resource Council  
 Northwest Montana Head Start  
 Northwest Montana United Way, Inc.  
 NOVA Center for the Performing Arts  
 Nurturing Center, Inc.

Old Trail Museum  
 Oneness Project  
 Open Aid Alliance  
 Opportunities, Inc.  
 Opportunity Link, Inc.  
 Opportunity Resources, Inc.  
 Organic Advisory and Education Council  
 Orphan Girl Children's Theatre  
 Parents Let's Unite for Kids - PLUK  
 Park County Community Foundation  
 Park County Environmental Council  
 Park County Senior Citizens Center  
 Plant a Seed READ  
 Pondera Arts Council  
 Poverello Center, Inc.  
 Presbyterian Church USA dba Peace Place  
 Prickly Pear Land Trust  
 Project Hope  
 Project Reflection  
 Project WET Foundation  
 Providence Montana Health Foundation  
 Pull Together Now  
 Ranchers Stewardship Alliance  
 Ravalli County Council on Aging  
 Ravalli County Museum and Historical Society  
 Reach Higher Montana  
 Reach Out & Care Wheels, Inc.  
 Reach, Inc.  
 Red Lodge Area Community Foundation  
 Red Willow Learning Center  
 Region IV Family Outreach, Inc.  
 Resource, Support and Development, Inc.  
 Richland Opportunities, Inc.  
 Rimrock  
 RiverStone Health Foundation  
 Roberts Community Foundation  
 Rocky Mountain College  
 Rocky Mountain Development Council, Inc.  
 Rocky Mountain Elk Foundation  
 Rocky Mountain Front Weed Roundtable  
 Roots Family Collaborative  
 Ruby Habitat Foundation  
 Ruby Valley Healthcare Foundation  
 Run Wild Missoula  
 Rural Dynamics, Inc.  
 SAFE Harbor, Inc.  
 Salish Kootenai College Foundation  
 Samaritan House, Inc.  
 Sanders County Coalition For Families



Seeley Lake Community Foundation  
 Seeley Lake Regional Center for Kinetic Sports  
 Shane Lalani Center for the Arts  
 She Action Sports Association  
 Shepherds Hand  
 Sheridan Health Care Foundation  
 Silver Bow Art  
 Sixth Judicial District CASA GAL  
 Smelter City Family Development  
 Snowy Mountain Development Corporation  
 Soil and Water Conservation Districts of MT, Inc.  
 South Central Montana Regional Mental Health Center  
 Southwest Montana School Services  
 Southwestern Montana Family YMCA  
 Special K Ranch, Inc.  
 Special Olympics Montana  
 Splashes of Joy  
 St. John's Lutheran Ministries  
 St. Labre Indian School Educational Association  
 St. Peter's Health Foundation  
 Stumptown Historical Society  
 Sula Country Life Club-Community Clubhouse  
 Summit Independent Living Center  
 Sun River Watershed  
 Sunburst Community Service Foundation, Inc.  
 Sunburst Unlimited, Inc.  
 Sunrise Women's Clinic  
 Supporters of Abuse Free Environments, Inc. (SAFE)  
 Swan View Coalition  
 Sweet Grass Community Foundation  
 Sweet Pea Festival of the Arts  
 Sweetgrass Development, EDD  
 Tamarack Grief Resource Center  
 Teller Wildlife Refuge

## NONPROFIT MEMBERS (CONT)

The Art Center  
The Center for Children and Families  
The Clay Studio of Missoula  
The Confluence Center  
The Montana Racial Equity Project  
The Nature Conservancy



The Parenting Place  
The Rosebud Foundation  
The Stevensville Historical Museum  
The Traveling School  
Thermus Aquaticus Learning & Swim Center  
Thrive  
Tobacco Valley Animal Shelter  
Travelers' Rest Preservation & Heritage Association  
Treacy Foundation  
Tri-County Firesafe Working Group  
Tumbleweed Runaway Program, Inc.  
Two Rivers Economic Growth, Inc.  
United Way of Beaverhead  
United Way of Butte and Anaconda  
United Way of Hill County  
United Way of Missoula County  
United Way of the Lewis & Clark Area  
United Way of Yellowstone County  
Upper Swan Valley Historical Society, Inc.  
Valley County Community Foundation  
Verge Theater

Veterinary Initiative for Endangered Wildlife  
Victim-Witness Assistance Services Inc.  
Violence Free Crisis Line, Inc.  
Vital Ground Foundation  
Volunteers of America Northern Rockies  
Warriors and Quiet Waters  
Watershed Education Network  
WaterWorks Art Museum  
Watson Children's Shelter, Inc.  
West Yellowstone Foundation  
Western Heritage Center  
Western Montana Area VI Agency on Aging  
Western Montana Chapter for the Prevention of Elder Abuse  
Western Montana Equine Rescue & Rehabilitation, Inc.  
Western Native Voice  
Western Sustainability Exchange  
Whitefish Community Foundation  
Whitefish Lake Institute  
Whitefish Legacy Partners  
Whitetail Ranch Center  
Wild Rockies Field Institute  
Wilderness Watch, Inc.  
Windhorse Equine Learning  
Women's Opportunity Resource - W.O.R.D.  
Women's Resource Community Support Center  
Women's Voices For The Earth  
Working Dogs for Conservation Foundation  
World Montana  
Writing Coaches of Montana  
Yellowstone Art Museum  
Yellowstone Bighorn Research Association  
Yellowstone Boys and Girls Ranch Foundation  
Yellowstone CASA  
Yellowstone Club Community Foundation  
Yellowstone Ecological Research Center  
Yellowstone Forever  
Yellowstone Historic Center  
Yellowstone River Parks Association Inc.  
Yellowstone Valley Animal Shelter  
Yellowstone Wildlife Sanctuary  
Yes Youth Empowerment Services  
Young Families Early Head Start, Inc.  
Youth Connections  
Youth Homes, Inc.  
YWCA Helena  
YWCA Missoula  
YWCA of Great Falls / Mercy Home  
ZooMontana  
Zootown Arts Community Center

---

# AFFILIATE MEMBERS

5th House Consulting  
Alan and Nancy Nicholson  
Arthur M. Blank Family Foundation  
Associated Employers  
Beartooth Business Consulting  
Bullhook Community Health Center, Inc.  
C.A. Consulting, LLC  
Chany Reon Ockert Consulting, LLC  
Cinnabar Foundation  
Comprehensive Professional Resources, LLC  
Crowley Fleck PLLP  
Downtown Bozeman Partnership  
Edge Marketing + Design  
Element L Design  
Firebrand Creative  
First Presbyterian Church of Helena  
First Security Bank of Helena  
Freeman & MacLean  
Frontline Processing Corporation  
Gianforte Family Foundation  
GrantHub, a division of Foundant Technologies  
Halliday Associates  
Hamilton Downtown Association  
Helena BID  
Invisage Consulting  
Janna Lundquist Consulting  
Jefferson Local Development Corporation  
Junkermier, Clark, Campanella, Stevens PC  
Kemp Events  
Lawrence D. Johnson; Attorney at Law  
Leadership Outfitters  
Marca R Gibson, CPA, CMA  
Missoula County Weed District & Extension  
MNA Group Benefit Trust  
Montana Arts Council  
Montana Bankers Association  
Montana Board of Crime Control-Department of Justice  
Montana Historical Society  
Montana State Parks  
Mountain-Pacific Quality Health  
MSU Billings Extended Campus  
MSU Bozeman Office of Student Engagement

Ned Cooney, Facilitator & Consultant  
North 40 Rescue  
Now IT Matters  
Park Side Credit Union  
Randall and Company PC  
Revirify Consulting Group  
Richland County Health Department  
Sage Solutions Nonprofit Consulting, LLC  
The Dotted i  
Third Sector Consulting Group, LLC  
Trister, Ross, Schadler & Gold, PLLC  
UM Office for Civic Engagement  
Verve Exchange Consulting  
Wipfli LLP



---

# SUSTAINING MEMBERS

Anderson ZurMuehlen & Co.  
Bloomingrang  
Eastern Montana Industries  
Firespring  
First Interstate Bancsystem  
Leavitt Group  
M+R Strategic Services  
O.P. & W.E. Edwards Foundation  
PayneWest Insurance





## INDIVIDUAL DONORS

Sandra Anderson  
Jean Ballantyne  
Jeri Bucy  
Whitney Cantlon  
Russ Cargo  
Karin Clark Cassens  
Don Clark  
Ned & Cathy Cooney  
Bruce Day  
Christian Dietrich  
Amy Drain  
Dorcie Dvarishkis

Ed & Joyce Eck  
Emily Flemming  
Susan Denson Guy  
John & Jasyn Harrington  
Judy Held  
Dee Incoronato  
Barb Knutson  
Lawrence D. Johnson;  
Attorney at Law  
Tim & Jennie Lockie  
Matt Lundgren  
Sherry Meador

Leslie Modrow  
Liz Moore  
Daniel Kemmis & Jean Larson  
Peggy Owens  
Scott Pankratz  
CB Pearson  
Brenda Peterson  
Candida Quinn  
Jane Ratzlaff  
Sheila Rice  
DeeAnn Richardson  
Jason Rittal

Lisa Robertson  
Hillary Selvin  
James & Linda Soft  
Talbot Household  
Rob Tallon  
Andrea Vernon  
Sherman Weimer  
Jerry Williams  
Willis Household  
Bob Wilmouth  
Dale Woolhiser  
Dawn Wrigg

---

## SPONSORS

Anderson ZurMuehlen  
Association of Fundraising Professionals, MT Chapter  
Bear Paw Development Corporation  
Beartooth Business Consulting  
Better Business Bureau Northwest  
Bitter Root Resource Conservation & Development Area  
Bloomerang  
Compass-360 Association  
Crowley Fleck PLLP  
EBMS  
Edge Marketing + Design  
ELAP Services, LLC  
Executive Services  
Firespring  
First Call Computer Solutions  
First Interstate BancSystem Foundation  
First Nonprofit Companies  
Foundant for Grantseekers  
Governor's Office of Community Service  
GrantHub, a division of Foundant Technologies  
Great River Strategies  
HealthServe  
Humble Twig LLC  
InterWest Health

Junkermier, Clark, Campanella, Stevens PC  
Leavitt Group  
Lora L. & Martin N. Kelley Family Foundation Trust  
MNA Group Benefit Trust  
M+R Strategic Services  
MoFi (Montana Community Development Corporation)  
Montana Children's Trust Fund  
Montana Community Foundation  
Montana Correctional Enterprises  
NorthWestern Energy  
P4 Marketing Group dba Executive Services  
PayneWest Insurance  
Reach Higher Montana  
Rocky Mountain College  
S. G. Long and Company  
Sage Solutions Nonprofit Consulting, LLC  
Strategies 360  
Third Sector Consulting  
Town Pump Hotel Group  
United Way of Cascade County  
United Way of Missoula County  
Wipfli LLP - Helena  
Yellowstone Boys and Girls Ranch Foundation

---

## FOUNDATION SUPPORT

Anaconda Community Foundation  
Dennis and Phyllis Washington Foundation  
First Interstate Bancsystem Foundation  
Helena Area Community Foundation  
L.P. & Teresa Anderson Foundation  
M.J. Murdock Charitable Trust  
Montana Community Foundation, Inc.  
Montana Healthcare Foundation

Mountain Sky Guest Ranch Fund  
O.P. & W.E. Edwards Foundation  
Oro Y Plata Foundation  
Park County Community Foundation  
Town Pump Charitable Foundation  
Treacy Foundation  
Sample Foundation  
The Steele Reese Foundation



**Montana Nonprofit Association**

[www.mtnonprofit.org](http://www.mtnonprofit.org) • (406) 449-3717

7 W. 6th Ave., Suite 504 • P.O. Box 1744 • Helena, MT 59624